

# ***PRODUCTION EQUIPMENT FOR INDUSTRY***



*Tubing Cutters • Wire & Cable Cutters and Strippers  
Wire Twisters • Infrared Heat Tools • Dereelers  
Winders • Measuring Meters • FyBrglass Brushes  
Component Preparation Tools • Custom Products*

*Quality Industrial Products  
Since 1911*





In 1911, we introduced our original line of Rush Fybrglass Erasers for the drafting and typing industries. From the beginning, the commitment of The Eraser Company was to provide customers with quality products designed to meet their unique challenges.

Through the years, a lot has changed: our products, our customer base, our manufacturing process. But our commitment has not. From simple Fybrglass erasers to high-tech cutters, strippers, and twisters, we remain dedicated to producing the highest quality products, engineered to exacting standards, to provide effective solutions for the challenges facing our customers.

Today, The Eraser Company bears little resemblance to the company founded 90 years ago. Our line of cutters, strippers and twisters is on the cutting-edge, incorporating technology, design, and programmability unsurpassed in the industry. The breadth of our product line allows us to serve an almost unlimited number of industries. Automotive. Electrical Assembly. Medical. Dental. Utilities. Plastics. Appliance. Telecommunications. Aerospace. The list goes on.

How do we deliver on our commitment?

- **FREE E.S.P., or Eraser Sample Program:** We encourage our customers to send in a sample of the material to be cut, stripped, twisted, or otherwise processed. We'll send the processed sample back, along with a comprehensive report detailing which Eraser machine is best suited for your specific application, a cost quote, and, where applicable, an estimated return on investment versus your current processing method. All at no charge.
- **Customized solutions:** If our standard product line does not offer exactly what you need it to do, we'll customize our equipment for you. Thousands of satisfied customers worldwide rely on one-of-a-kind, customized Eraser machines to handle their toughest challenges. We can do the same for you.

Whether you're an existing customer, or just beginning your partnership with us, we look forward to serving you.



Eraser Cleaning and Burnishing brushes are made from coarse and fine grade Fybrglass, brass, nylon and stainless steel. The tools are suitable for a wide variety of cleaning, burnishing and polishing applications including electrical contact cleaning, mold cleaning, rust removal, deburring small metal parts, erasing printing marks, cleaning contact pads and fingers of printed circuit boards, and much more. Custom designed brushes for your process can be quoted upon request.

### ECT1 Electric Cleaning Tool

The ECT1 features integral rechargeable batteries for portability. There are no trailing wires, and when used intermittently, it automatically recharges when placed in the bench stand. Unit is recommended for intermittent use, however it may be run directly from the charger if the batteries are exhausted.



#### Ordering Information

- AA0125 (ECT1)**.....Electric cleaning tool complete with bench stand, charger, six each fine Fybrglass refills, six each coarse Fybrglass refills, one each brass refill, one each stainless steel refill, and one each nylon refill. Unit fitted with standard head 110V 60Hz
- AA0126 (ECT1)**.....Electric cleaning tool 220/240V 50Hz
- PA0134**.....Extra long rotating head for cleaning in confined areas

#### Accessories and Refill Brushes

- IA0009**.....Replacement plexiglass guard
- IA0743**.....Replacement protective vinyl tips
- AA0019 (E113/F)**...Fine Fybrglass refills (packet of 25)
- AA0014 (E113/C)**.....Coarse Fybrglass refills (packet of 25)
- AA0007 (E114)**.....Stainless Steel refills (each)
- AA0015 (E115)**.....Stainless Steel refills (packet of 25)
- AA0008 (E119)**.....Brass refills (each)
- AA0016 (E121)**.....Brass refills (packet of 25)
- AA0009 (E124)**.....Nylon refills (each)
- AA0017 (E125)**.....Nylon refills (packet of 25)



### All Kit

The ultimate brush kit, containing all of the industrial brushes except the ECT1, provides the opportunity to evaluate all the brushes and have on hand the solution to many cleaning, polishing, and burnishing problems at all times.

#### Ordering Information

- AA0012 (ALLKIT)**.....Kit of all brushes



### BR4 Metal Cased Brushes

An adjustable metal cased brush. The brush is propelled from the case by a turn of a knob to compensate for wear.

Brushes will not alter electrical properties or contaminate surfaces cleaned. Overall length of brush is 4" (102mm), cleaning surface is 1-3/8" x 3/8" (35mm x 9.5mm), and usable brush length is 2-3/4" (69mm).

#### Ordering Information

- AA0024 (BR4/F)**.....Metal cased brush in fine grade material (red)
- AA0025 (BR5/F)**.....Fine refill for BR4/F (one set)
- AA0127 (BR4/C)**.....Metal cased brush in coarse grade material (blue)
- AA0131 (BR5/C)**.....Coarse refill for BR4/C (one set)

### Utility Brushes

The TB1F and TB2F hand held brushes, manufactured from fine grade Fybrglass material, are designed to clean and burnish in confined or out of reach areas.



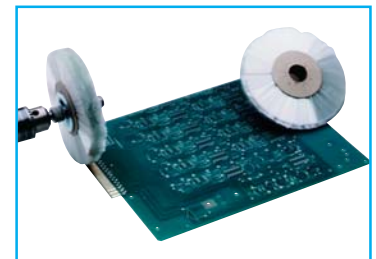
The overall length of the TB1F is 6" (152mm), the width of the handle is 1/2" (12.7mm) and the thickness of the handle is 3/16" (4.8mm). The TB2F is 7" (178mm) long, the width of the handle is 3/8" (9.5mm) and the thickness of the handle is 1/2" (12.7mm) at the head.

#### Ordering Information

- AA0700 (TB1F)**.....Utility brush — wood handle
- AA0800 (TB2F)**.....Utility brush — plastic handle

### Rotary Fybrglass Cleaning Wheel

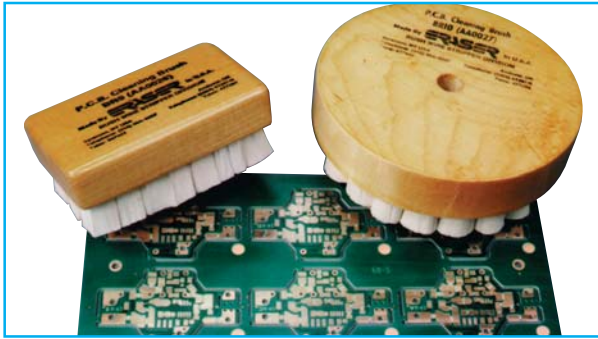
Filled with pure spun fine Fybrglass fibers with no bonding agent this wheel is designed for rotary use mounted on spindles or mandrels. Wheels may be stacked together on a spindle to produce a wide face brush. The maximum safe free speed for the CP154 is 2,000 RPM.



#### Ordering Information

- BE0002 (CP154)**.....Fybrglass wheel 4" OD x 1/2" wide with 3/4" arbor hole (101mmø x 12.7mm x 19mmø)

### BR9 and BR10 PCB Brushes



Hand held and rotary power brushes for cleaning and burnishing printed circuit boards. A gentle brushing action will remove oxidation from copper and soldered surfaces. No water or solvent is required with them to produce a cleaning action.

The cleaning surface of the BR9 measures 2" x 3" (51mm x 76mm). The BR10 has a 1/2" diameter (12.5mmø) arbor hole, and contains a 4-1/2" diameter (114mmø) circular pattern of Fybrglass bristles. Suggested maximum rotating speed of the BR10 is 1,000 RPM.

#### Ordering Information

AA0026 (BR9).....Hand brush — fine grade Fybrglass  
AA0027 (BR10).....Rotary brush — fine grade Fybrglass

### Pen Type Erasers



A range of refillable cleaning tools using brushes made from coarse and fine grade Fybrglass, brass, nylon, and stainless steel. Available in plastic body or all metal construction. Sold individually or in a kit that contains five tools with brushes made from brass, stainless steel, nylon, and coarse and fine Fybrglass.

#### Ordering Information

##### Fybrglass Eraser and Refills

AA0019 (E113/F).....Fine Fybrglass refills (red)  
(packet of 25)  
AA0014 (E113/C).....Coarse Fybrglass refills (blue)  
(packet of 25)

##### Stainless Steel Eraser and Refills

AA0003 (E116).....Metal Body Stainless Steel eraser (silver)  
AA0007 (E114).....Stainless Steel refills (each)  
AA0015 (E115).....Stainless Steel refills (packet of 25)

### Eraser Stick Brushes



Stick and Abraser brushes with plastic protective covering that is cut back as brush wears. Fybrglass brushes are manufactured from spun glass in two grades of material, coarse and fine. Brushes will not alter electrical properties or contaminate surfaces cleaned.

#### Ordering Information

##### All Stick Brushes are 5-1/2" long (140mm)

AA0104 (BR0/F).....Fine stick brush 1/4" OD  
(6mmø), (red)  
AA0022 (BR1/F).....Fine stick brush 5/8" OD  
(16mmø), (red)  
AA0023 (BR2/F).....Fine stick brush 1" OD  
(25mmø), (red)  
AA0130 (BR0/C).....Coarse stick brush 1/4" OD  
(6mmø), (blue)  
AA0129 (BR1/C).....Coarse stick brush 5/8" OD  
(16mmø), (blue)  
AA0128 (BR2/C).....Coarse stick brush 1" OD  
(25mmø), (blue)  
AA0123 (BRKIT).....One each of stick brushes  
**Abraser brushes are 7/8" (22mm) long**  
AA0600 (ABR3C).....Coarse grade abramer (blue)  
AA0610 (ABR3F).....Fine grade abramer (red)  
AA0650 (ABR6C).....Coarse grade abramer (blue)  
package of 10  
AA0670 (ABR6F).....Fine grade abramer (red)  
package of 10

### Pen Type Erasers, continued

#### Ordering Information

##### Brass Eraser and Refills

AA0004 (E120).....Metal Body Brass eraser (gold)  
AA0008 (E119).....Brass refills (each)  
AA0016 (E121).....Brass refills (packet of 25)

##### Nylon Eraser and Refills

AA0005 (E125).....Metal Body Nylon Eraser (black)  
AA0009 (E124).....Nylon refills (each)  
AA0017 (E125).....Nylon refills (packet of 25)  
AA0124 (EKIT).....Kit of 5 Metal Body erasers  
AA0066 (E66).....Kit of Plastic Body Coarse Fybrglass  
eraser with one each Brass,  
Stainless Steel, Fine Fybrglass refill

AA0077 (E77).....Kit of Metal Body Coarse Fybrglass  
eraser with one each Brass,  
Stainless Steel, Fine Fybrglass refill

Eraser manufactures an array of industrial-grade cutters suitable for cutting a wide range of materials. Designed to fit your specific application, material, and budget, Eraser cutters are available in automatic and semi-automatic, bench and portable. And if we don't have one suitable for your specific needs, we can customize to fit your requirements.

### CS800 Automatic Cutter & Stripper



Fully programmable, fully electric benchtop wire cut & strip. With programmable batching and ten variable feed rates, the CS800 is the perfect production tool for complete automation.

#### Specifications

Max. material size ..... 10AWG(2.95mm $\phi$ )  
 Max. cut length ..... 9,999,999"  
 Min. cut length ..... 0.1" (2.54mm)  
 Max. strip length ..... 4" (101.6 mm)  
 Min. cut length ..... .01"(2.54mm)  
 Tolerance ..... 1%  
 Batching ..... up to 67 programmable

#### Ordering information

AR7201 (CS800) ..... Wire Cut & Strip 115V  
 AR7202 (CS800) ..... Wire Cut & Strip 230V  
 IR1792 ..... .047 ID bushings  
 IR1793 ..... .098 ID bushings  
 IR1794 ..... .116 ID bushings  
 IR1795 ..... .250 ID bushings  
 IR1791 ..... .035 ID bushings

### FTC1 Flexible Tubing Cutter



Designed to cut material such as tygon, radiator hose, flexible PVC, polyurethane, silicone, nylon PTFE, FEP and PFA to length, this cutter is the perfect tool for flexible tube cutting.

#### Specifications

Material size.....1 1/8" to 1/4"  
 (28.6mm - 6.4mm)  
 Max. cut length.....unlimited  
 Min. cut length.....2.00" (50.8mm)

#### Ordering information

AR1421 (FTC1).....115V, 60Hz  
 AR1422 (FTC1).....230V, 50Hz  
 IR1807.....Bushing Set  
 IR1296.....Cutting Blade  
 PR1026.....Flat Belt

### LFTC1 Large Flexible Tubing Cutter



Designed to cut material such as tygon, radiator hose, flexible PVC, polyurethane, silicone, nylon PTFE, FEP and PFA to length, this cutter is the perfect tool for large flexible tube cutting.

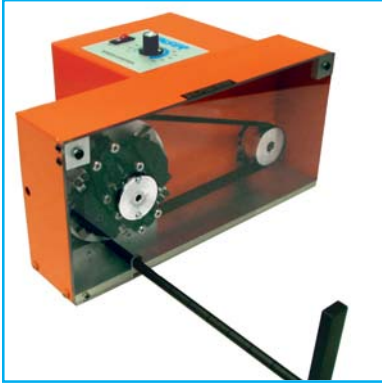
#### Specifications

Material size.....2 1/8" to 1/2"  
 (54mm - 12.7mm)  
 Max. cut length.....unlimited  
 Min. cut length.....2.00" (50.8mm)

#### Ordering information

AR1431 (LFTC1).....115V, 60Hz  
 AR1432 (LFTC1).....230V, 50Hz  
 IR1817.....Bushing Set  
 IR1819.....Cutting Blade  
 PR1026.....Flat Belt

### RTC1 Rigid Tubing Cutter



Designed to cut material such as copper, aluminum and mild steel, this cutter is the perfect tool for rigid tube cutting.

#### Specifications

Max. Material size.....1/2" OD (12.7mm)  
Min. Material size .....3/32" ID (2.36mm)

Max. cut length.....unlimited  
Min. cut length.....2.00" (50.8mm)

#### Ordering information

AR1411 (RTC1).....115V, 60Hz  
AR1412 (RTC1).....230V, 50Hz  
PR1296 Cutting Discs .....2 Required per Machine  
IR1809.....Bushing Set  
PR1026.....Replacement Drive Belt

### WC601A Variable Speed Cutter



Designed to cut hook-up wire, solder, miniature cables, and shrink tubing to length, this cutter is perfect for any assembly environment.

#### Specifications

Max. material size.....0.375" OD (9.5mmØ)  
12 AWG (2.06mmØ) solid copper

Max. cut length.....9,999,999"

Min. cut length.....0.1" (2.54mm)

Tolerance.....under 2", +/- .01; over 2"  
1% or better dep. on material and feed rate

Batching.....up to 99 programmable batches

Kits.....10 programmable kits

#### Ordering information

AR7121 (WC601A).....115V 60Hz, 90 PSI

AR7122 (WC601A).....230V 50Hz, 90 PSI

*Dereeler optional (DE400 or DE700); see Dereeler section for details.*

### WC601B Rotary Blade Tubing Cutter



The ultimate automatic cutter provides square cuts on flexible tubing up to 1/2" OD.

#### Specifications

Max. material size.....0.500" (12.7mm) thick

Max. cut length.....9,999,999"

Min. cut length.....0.1" (2.54mm)

Tolerance.....under 2", +/- .01; over 2", 1% or better  
dep. on material and feed rate

Batching.....up to 99 programmable batches

Kits.....up to 10 programmable kits

#### Ordering information

AR7131 (WC601B).....115V 60Hz

AR7132 (WC601B).....230V 50Hz

AR7133 (WC601B).....230V 50Hz, UK plug

IR1017.....custom bushing, send material for sizing

*Dereeler optional (DE100 or DE700); see Dereeler section for details.*

### WC600D Rotary Blade Tubing Cutter



This automatic cutter provides square cuts on flexible tubing up to 1 1/8" OD.

#### Specifications

Material.....1/2" to 1 1/8" OD (12.7 to 28.5mmØ)

Max. cut length .....999,999.99"  
(999,999.9mm)

Min. cut length .....0.100" (2.52mm)

Tolerance .....under 2", +/- .02; over 2"  
1% or better dep. on material and feed rate

Feed Rate.....10.4" (264mm) per second

#### Ordering Information

AR7101 (WC600D).....115V, 60Hz

AR7102 (WC600D).....230V, 50Hz

AR7103 (WC600D).....230V, 60Hz UK plug

IR097.....custom bushing, send material for sizing

*Dereeler optional (DE100 or DE700); see Dereeler section for details.*

### Specifications

Max. material size.....0.625" (15.9mm) thick  
 3.94" (100mm) wide, 8 AWG solid copper  
 Max. cut length.....9,999,999"  
 Min. cut length.....0.10" (2.54mm)  
 Tolerance.....1% or better dep. on material and feed rate  
 Batching.....up to 10 programmable batches  
 Max. cutting force.....600 lbs.  
 Feed rate.....up to 7,200 4" (101.6mm) pieces per hour

### Ordering information

AR0371 (MMC100).....115V 60Hz, 90 PSI  
 AR0372 (MMC100).....220/240V 50Hz, European plug, 90 PSI  
 AR0373 (MMC100).....220/240V 50Hz, UK plug, 90 PSI  
*Dereeler optional (DE400 or DE700); see Dereeler section for details.*

### Specifications

Max. tubing size.....0.312" OD (7.92mmø)  
 Max. copper wire.....10 AWG (2.59mmø) stranded  
 Max. cut length.....9,999,999.00  
 Min. cut length.....0.10" (2.54mm)  
 Tolerance.....under 2", +/- .02; over 2"  
 1% or better dep. on material and feed rate  
 Feed rate.....three options: 23"/sec.; 31"/sec.; or 54"/sec.  
 Batching.....up to 10 programmable batches

### Ordering information

AR7111 (WC301).....115V 60Hz  
 AR7112 (WC301).....230V 50Hz, European plug  
 AR7113 (WC301).....230V 50Hz, UK plug  
*Dereeler optional (DE100 or DE700); see Dereeler section for details.*

### Specifications

Max. blade opening .....1.25" diameter (31.75mm)  
 Min. material size.....0.010" diameter (0.254mm)

### Ordering information

AR0291 (HCA20).....115V 60Hz  
 AR0292 (HCA20).....220/240V 50Hz, European plug  
 AR0293 (HCA20).....220V 50Hz, UK plug

## MMC100 Multi-Material Cutter



A versatile cutter that cuts flat, round and multiple materials from 8 AWG wire to cellophane tape.

## WC301 High Speed Cutter



An economical, automatic cutter for quick preparation of hook-up wire, sleeving, shrink tubing, cables, and plastic tubing.

## HCA20 Wire & Cable Cutter



This air-operated cutter uses a guillotine-style blade to quickly shear wire and cable up to 1.25" in diameter.

### FC10 & HC10 Cable Cutters



Whether the foot-operated FC10 or the hand-operated HC10, these cutters provide clean, square cutting of a variety of different wires and cables.

#### Specifications

Max. blade opening.....1.00" diameter (31.75mm)  
 Min. material size.....0.010" diameter (0.254mm)

#### Ordering information

AR5700 (HC10).....hand operated  
 AR5800 (FC10).....foot operated  
 IR8881.....bench stand for FC10  
 IR8775.....conversion kit, changes HC10 to FC10

### CCB100 Battery Operated Cable Cutter



This battery-operated cutter is ideal for cutting copper or aluminum in the field.

#### Specifications

Max. cable diameter.....1000 kcmil soft drawn copper  
 750 kcmil hard drawn copper  
*not for use on steel*

Blades.....hardened steel (one fixed, one rotating)  
 Power.....12.0V DC motor  
 Battery.....sealed nickel cadmium  
 Battery charger.....120V 60Hz AC single phase

#### Ordering information

ER0601 (CCB100).....portable cable cutter kit

### MR30A Handheld Air-Operated Cutter



Lightweight and powerful, this air-operated cutter uses 70-90 PSI to create up to 617 pounds of cutting force.

#### Specifications

Max. wire size.....0.130" OD (3.3mmø) copper  
 0.110" OD (2.79mmø) steel  
 0.047" OD (1.19mmø) piano wire  
 Tool dimensions.....7" (177.8mm) long, 2.20" OD (56mmø)  
 Tool weight.....1.2 lbs. (0.544 Kg)  
 Air connection.....1/4" NPT

#### Ordering information

DE0009 (MR30A).....90 PSI  
 CL0148.....blade for diagonal cuts  
 CL0149.....blade for center cuts  
 CL0158.....blade for end cuts  
 CL0159.....carbide tipped blade for diagonal cuts

## Optional Dereelers for Wire, Cable & Tubing Cutters



**DE700 (AR0170)  
Compensating Dereeler**

- max. reel diameter 16-1/2" OD (419mm $\emptyset$ )
- max. reel weight 100 lbs. (45 Kg)
- reel hub diameter 5/8" to 1-3/16" OD (16mm to 30mm $\emptyset$ )
- max. reel width 10-1/4" (260mm)



**DE400 (AR3801)  
Bench Mounted Dereeler**

- max. reel diameter 19" OD (483mm $\emptyset$ )
- reel hub diameter 11/16" to 6" OD (17.5mm to 152mm $\emptyset$ )
- max. reel width 6" (152mm)



**WS1 (AR3950)  
Wire Straightener**

- for use with all wire cutters
- max. opening between rollers is 3/8" (9.5mm)



**DE500 (AR0015)  
Five Station Dereeler**

- max. reel diameter 6-1/2" OD (165mm $\emptyset$ ) for each of five turntables
- Overall turntable size 18" OD (463mm $\emptyset$ )
- accommodates five reels at 50 lbs. (23 Kg) each



**DE100 (AR0010)  
Turntable Dereeler**

- turntable diameter 8" OD (203mm $\emptyset$ )
- max. reel weight 100 lbs. (45 Kg)



**CS800 Automatic Cutter & Stripper**

*Optional accessories*

IR1776.....	adjustable bench stand
PR1222.....	radius blade set for 12AWG
PR1221.....	radius blade set for 10AWG
PR1223.....	radius blade set for 14AWG
AR3950.....	WS1 Wire Straightener for material up to 3/8" (9.5mm)

**RTC1 Rigid Tubing Cutter**

*Optional accessories*

TR0176.....	length stop rod
-------------	-----------------

**FTC1 Flexible Tubing Cutter**

*Optional accessories*

TR0176.....	length stop rod
-------------	-----------------

**LFTC1 Flexible Tubing Cutter**

*Optional accessories*

TR0176.....	length stop rod
-------------	-----------------

**WC601A Wire & Tubing Cutter**

*Optional bushing sets:*

IR0755.....	for up to 1/8" OD (3.17mmø) material [actual size is 0.156" (3.96mm)]
IR0756.....	for up to 1/4" OD (6.35mmø) material [actual size is 0.281" (7.14mm)]
IR0757.....	for up to 3/8" OD (9.5mmø) material [actual size is .406" (10.3mm)]
IR0763.....	for 1/8" - 3/8" (3.175mmø - 9.525mmø), send material for sizing
IR0764.....	for 1/16" - 1/8" (1.60mmø-3.175mmø), send material for sizing
IR0765.....	for 1/32"-1/16" (0.793mmø-3.175mmø), send material for sizing

**WC301 High Speed Cutter**

*Optional accessories*

IR1038.....	custom cut plate
IR0969.....	solid ground blade
IR1196.....	carbide cutting blade
IR5171.....	urethane drive roller

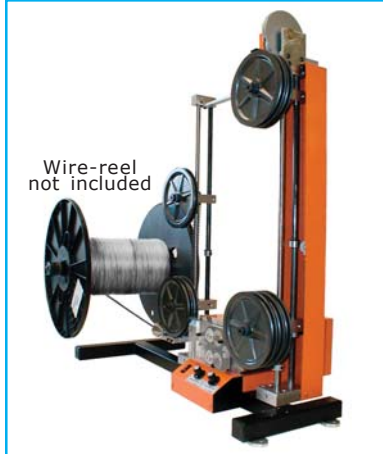
**MMC100 Multi-Material Cutter**

*Optional accessories*

IR1322.....	upper blade for thin, flat material
-------------	-------------------------------------

Eraser offers reelers, dereelers, winders and measuring tools for a broad range of wire and cable handling needs. Manual, motorized or compensating reelers and dereelers and measuring tools work with Eraser cable processing units to provide complete combinations of material handling equipment.

## APF100 Prefeeder & Wire Payout



Wire-reel not included

The APF100 Prefeeder and Wire Payout machine is designed for wire sizes .030" - .312"OD dependent upon material condition. The APF100 can be used with any Wire and Tubing Cutter or Cut & Strip machine.

### Specifications

Wire Sizes:  
 .030" - .312"OD (.762mmø - 7.9mmø) - Dependant on material condition.  
 Capacity:  
 Reels up to 18" (457.2mm) in diameter and 12" (304.8 mm) in width.

### Ordering information

AR6201 (APF100 110V).....Prefeeder & Wire Payout  
 AR6202 (APF100 220V).....Prefeeder & Wire Payout  
*Optional Parts*  
 PR1212 (Interface Cable).....For use with CS800 Cut & Strip.  
 AR3950 (Wire Straightner).....For wires up to 3/8" (9.5mm).

## CW10 Small Reeler and Dereeler



A collapsible reeler with friction clutch for a variety of wire and cable also dereels hanks or coils of material by reversing the reeling operation.

### Specifications

Coil Dimension:  
 Inside Diameter Variable 5" (127mmø) to 12" (305mmø)  
 Unit may be set and locked for a specific diameter  
 Capacity:  
 Length Up to 1000' (305M) of 1/8" (3.18mmø)diameter wire or equivalent  
 Weight of Coil 55 lbs. (25 Kg) maximum

### Ordering information

AR6001 (CW10).....Small Reeler and Dereeler  
*Optional Parts*  
 IR0491 (Bench Stand).....For use with reelers, dereelers and measuring meters  
 IR0492 (Floor Stand).....For use with reelers, dereelers and measuring meters

## CW20 Medium Reeler and Dereeler



The unit has a friction clutch, making it ideal for dereeling, measuring, cutting and reeling operations by production kitters, jobbers, and electrical contractors.

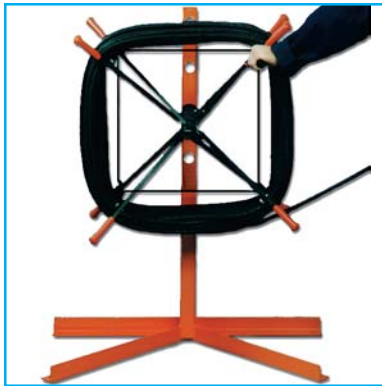
### Specifications

Coil Dimension:  
 Inside Diameter Fixed at 12" (305mmø)  
 Outside Diameter Variable up to 21" (419mmø)  
 Width of Coil:  
 At Inside Diameter Up to 3 1/2" (89mm)  
 At Maximum Outside Diameter Up to 7 1/2" (191mm)  
 Capacity:  
 Length Up to 1200' (366M) of 1/4" (6.35mmø) diameter wire or equivalent  
 Weight of Coil 60 lbs. (27.3 Kg) maximum

### Ordering information

AR7001 (CW20).....Medium Reeler and Dereeler  
*Optional Parts*  
 IR0491 (Bench Stand).....For use with reelers, dereelers and measuring meters  
 IR0492 (Floor Stand).....For use with reelers, dereelers and measuring meters

## CW30 Large Reeler and Dereeler



This collapsible unit reels or dereels coils of wire or cable. An adjustable friction clutch is incorporated to prevent overruns in dereeling operations.

### Specifications

Coil Dimension:  
 Inside Diameter Fixed at 27" (686mm $\varnothing$ )  
 Outside Diameter Variable up to 36" (914mm $\varnothing$ )  
 Width of Coil:  
 At Inside Diameter Up to 6 1/4" (159mm)  
 At Maximum Outside Diameter Up to 9 1/2" (241mm)  
 Capacity:  
 Length Up to 300' (91M) of 3/4" (19mm $\varnothing$ ) diameter wire  
 or equivalent  
 Weight of Coil 150 lbs. (68.2 Kg) maximum

### Ordering information

AR8001 (CW30).....Large Reeler and Dereeler

## Measuring Meters



Designed to measure long lengths of wire, cable, flat cable and other flexible material, a digital counter records the amount of measured material.

### Specifications

Measure rates.....up to 1,000 feet (305M) per minute  
 Material size.....Flexible material from 1/64" (0.40mm)  
 to 2" (50.8mm) dia. or width  
 Readout.....feet and inches to 9,999'11"  
 or meters and 1/10 meters to 9,999.9M  
 Accuracy..... $\pm 5\%$  depending on material and feed

### Ordering information

AR0610 (WMI).....Measuring meter (feet/inches)  
 steel rollers  
 AR0620 (WMM).....Measuring meter (meters)  
 steel rollers  
 AR0630 (WMIU).....Measuring meter (feet/inches)  
 urethane rollers  
 AR0640 (WMMU).....Measuring meter (meters)  
 urethane rollers  
 AR0650 (WMIG).....Measuring meter (feet/inches)  
 abrasive coated rollers  
 AR0660 (WMMG).....Measuring meter (meters)  
 abrasive coated rollers

### Optional Parts

IR0491.....bench stand  
 IR0492.....adjustable floor stand

## DE200/DE300 Reel Lifter and Dereeler



Utilizing the help of leverage, these units enable two people to set up reels over 2000 lbs. (909 Kg) in weight.

### Specifications

DE200 Max. reel width.....25" (635mm)  
 DE300 Max. reel width.....31" (787mm)  
 DE200 Max. reel dia.....36" (914mm $\varnothing$ )  
 DE300 Max. reel dia.....48" (1219mm $\varnothing$ )  
 Min. reel arbor dia.....1-11/16" (43mm $\varnothing$ )

### Ordering information

AR5200 (DE200).....Cable reel lifter and dereeler  
 AR5300 (DE300).....Cable reel lifter and dereeler

### Specifications

DE600 Max. reel width.....14-3/4" (365mm)  
 DE600M Max. reel width.....15-3/4" (390mm)  
 Max. reel dia.....29" OD (737mmø)  
 Reel arbor diameter.....3/4" to 2-1/8" (19mmø to 54mmø)

### Ordering Information

AR5600 (DE600).....Manual dereeler and winder  
 AR5701 (DE600M).....Motorized dereeler and winder,  
 115V 60Hz  
 AR5702 (DE600M).....Motorized dereeler and winder,  
 230V 50Hz

## DE600 & DE600M Dereeler & Winder



When motorized, the reeler easily reels wire or cable without operator fatigue, or dereels large amounts of wire or cable with no pulling. A handle enables manual reeling and dereeling.

### Specifications

Max. reel diameter.....16-1/2" OD (419mmø)  
 Max. reel weight.....100 lbs. (45Kg)  
 Reel hub diameter...5/8" to 1-3/16" OD (16mm to 30mmø)  
 Max. reel width.....10-1/4" (260mm)

### Ordering information

AR0170 (DE700).....Compensating dereeler

## DE700 Compensating Dereeler



By providing fine adjustment control on the reel payout tension, this compensating dereeler prevents material over-runs when used with wire cutters or cut and strip machines.

### DE100 Turntable Dereeler



The single station turntable will accommodate a reel up to 100 lbs. (45 Kg)

#### Specifications

Turntable Diameter.....8" (203mm $\emptyset$ )  
Maximum reel weight.....100 lbs. (45 Kg)

#### Ordering information

AR0010 (DE100).....Single Station Dereeler

### DE500 Five Station Dereeler



This free-running, five station dereeler will hold up to five 50 lb. (23 Kg) reels and is perfect for all dereeling applications.

#### Specifications

Turntable Diameter.....18" (463mm $\emptyset$ )  
Individual Turntable Diameter.....6-1/2" (165.1mm $\emptyset$ )  
Maximum reel weight.....Five 50 lbs. (23 Kg) reels

#### Ordering Information

AR0015 (DE500).....Five Station Dereeler

### DE400 Bench Mounted Dereeler



Bench mounted, this unit adjusts for reel hub diameter for various sizes up to 50lb.

#### Specifications

Max. reel dia.....19" (483mm $\emptyset$ )  
Reel hub dia.....11/16" to 6" (17.5mm to 152mm $\emptyset$ )  
Max. reel width.....6" (152mm $\emptyset$ )

#### Ordering information

AR3801 (DE400).....Reeler and dereeler  
*Optional Part*

IR0491.....Bench stand

IR0492.....Floor stand

TR4400.....Extension Kit



### CS800 Automatic Cutter & Stripper



Fully programmable, fully electric benchtop wire cut & strip. With programmable batching and ten variable feed rates, the CS800 is the perfect production tool for complete automation.

#### Specifications

Max. material size ..... 10AWG(2.95mm $\phi$ )  
 Max. cut length ..... 9 999,999"  
 Min. cut length ..... 0.1" (2.54mm)  
 Max. strip length ..... 4" (101.6 mm)  
 Min. cut length ..... .01"(2.54mm)  
 Tolerance ..... 1%  
 Batching ..... up to 67 programmable

#### Ordering information

AR7201 (CS800) ..... Wire Cut & Strip 115V  
 AR7202 (CS800) ..... Wire Cut & Strip 230V  
 IR1792 ..... .047 ID bushings  
 IR1793 ..... .098 ID bushings  
 IR1794 ..... .116 ID bushings  
 IR1795 ..... .250 ID bushings  
 IR1791 ..... .035 ID bushings

### C100S Rotary Wire Stripper



Strip length and blade depth adjustments can be made while this centrifugal wire stripper and twister is running.

#### Specifications

Max. wire size over insulation.....0.228" OD (5.79mm $\phi$ )  
 Min. wire size over insulation.....0.031" OD (0.079mm $\phi$ )  
 Max. strip length.....1-1/2" (38mm)  
 Min. strip length with standard strip length stop.....  
 varies from 3/16" (4.7mm) on a 28 AWG (0.33mm $\phi$ ) wire  
 to 5/16" (7.9mm) on a 14 AWG (1.63mm $\phi$ ) wire

#### Ordering information

AR2171 (C100S).....115V 60Hz  
 AR2172 (C100S).....220/240V 50Hz European plug  
 AR2173 (C100S).....220/240V 50Hz UK plug  
 See page 26 for wire guide selection and optional parts.

### C200 & C300 Wire Strippers & Twisters



Strips most insulation from solid and stranded wires, Teflon, P.T.F.E., PVC, nylon, rubber, KEL-F, miniature coax, coaxial cables, shielded wires and cables.

#### Specifications

Max. wire size over insulation.....0.265" OD (6.73mm $\phi$ )  
 Min. wire size over insulation.....0.028" OD (0.071mm $\phi$ )  
 dep. on wire rigidity  
 Max. conductor dia.....0.219" OD (5.5mm $\phi$ )  
 Max. strip length (w. strip stop).....2-1/2" (63.5mm)  
 Max. strip length (w/o strip stop).....dep. on wire or cable  
 Min. strip length.1/32" (.79mm), dep. on insulation thickness

#### Ordering information

AR4901 (C200).....single head stripper, 115V 60Hz  
 AR4902 (C200).....single head stripper, 220/240V 50Hz  
 AR9501 (C300).....triple head stripper, 115V 60Hz  
 AR9502 (C300).....triple head stripper, 220/240V 50Hz  
 See page 26 for wire guide selection and optional parts.



### CM20 Large Cable Stripper



Uses a rotary blade to strip large cables and removes all types of insulation from solid, stranded or multi-core cables.

#### Specifications

Wire size.....1/2" to 1-3/8" (12.7mm to 35mm $\phi$ )  
over insulation  
Strip length.....up to 6" (152mm) dep. on cable construction

#### Ordering information

AR0301(CM20).....115V 60Hz  
AR0302 (CM20).....220V/240V 50Hz  
IR8921.....Custom bushing, send material for sizing

#### Optional Parts

PR0313.....replacement carbide swing blade  
IR0154.....replacement blade for thick, slippery or soft insulations  
IR0155....replacement blade for thin or hard insulations

### BTS1 Thermal Wire Stripper



With a variable temperature setting, this stripper is ideal for use on solid and stranded wires, and small cables

#### Specifications

Wire size.....up to 1/2" OD (12.7mm $\phi$ )  
Min. wire size.....36 AWG (0.13mm $\phi$ )  
Max. strip length.....1-1/2" (38mm),  
or unlimited with optional 90° element adapters

#### Ordering information

AR0111 (BTS1).....115V 60Hz  
AR0112 (BTS1).....220V/240V 50Hz

#### Optional Parts

IR1479.....right angle adaptor kit for unlimited strip lengths  
IR1473.....one pair of replacement elements  
IR1474.....small die element set (.050", .080", .102" dia.)  
IR1475.....large die element set (.120", .140", .160" dia.)  
IR1491.....foot switch  
AR6701.....FE1 fume extractor, 115V 50/60Hz  
AR6702.....FE1 fume extractor, 230V 50/60Hz  
AA0004.....brass Eraser brush to clean elements

### FE1 Fume Extractor



Used to extract fumes or smoke during thermal stripping, soldering or desoldering operations

#### Specifications

Airflow.....105 CFM (49 liters per second) at 60Hz  
Filter.....Activated carbon-impregnated

#### Ordering information

AR6701 (FE1).....fume extractor, 115V 50/60Hz  
AR6702 (FE1).....fume extractor, 230V 50/60Hz

#### Optional Parts

IR8943.....Pack of 3 replacement filters  
PR3702..... 4" OD (102mm ) hose adapter for connection to an in-house ventilation system

### Specifications

Stripping range (over insulation)  
 JCS16.....5/32" to 5/8" OD (4mm to 16mmØ)  
 JCS27.....5/16" to 1-1/8" OD (8mm to 29mmØ)  
 JCS35.....1" to 1-3/8" OD (25mm to 35mmØ)  
 JCS50.....1-3/8" to 1-13/16" OD (35 mm to 46mmØ)  
 JCS28....(with cutting blade) 5/16" to 1-1/8" OD (8mm to 29mmØ)

### Ordering information

DE0016 (JCS16).....hand tool  
 DE0027 (JCS27).....hand tool  
 DE0035 (JCS35).....hand tool  
 DE0050 (JCS50).....hand tool  
 DE0028 (JCS28).....hand tool

### Specifications

Stripping range.....20 to 11 AWG (0.81mm to 2.31mmØ)  
 stranded or solid  
 Strip length.....mechanical 0.196" to 0.59" (5mm to 15mm)

### Ordering information

DE0007 (HBS1).....hand tool  
 CL0171.....replacement blade set

### Specifications

Stripping range.....20 to 11 AWG (0.81 to 2.31mmØ)  
 stranded or solid  
 Strip length.....visual 0.315" to 0.47" (8mm to 12mm)  
 Internal wire cutter.....14 AWG max. (1.63mmØ)

### Ordering information

DE0008 (HBS2).....hand tool  
 CL0191.....replacement blade set

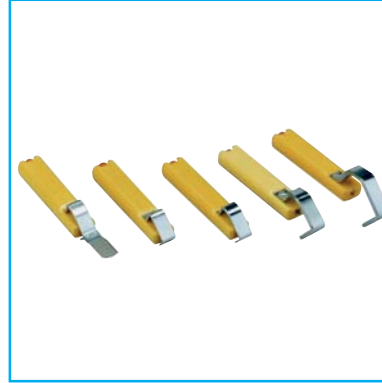
### Specifications

Stripping range (HWS).....24 to 8 AWG (0.51mm to 3.25mmØ)  
 Stripping range (HWSS)...28 to 16 AWG (0.33mm to 1.30mmØ)

### Ordering information

DE0010 (HWS).....hand tool  
 DE0011 (HWSS).....hand tool

## Rotary Cable Strippers



Adjustable depth swivel blades allow easy peel-off of insulation, even for cables with tightly molded insulation.

## Precision Die Blade Wire Stripper



This stripper for the telecom, electrical and motor industries works well on wires insulated with problematic material

## "V" Blade Wire Stripper



An ergonomic automatic wire stripper for precise stripping of cables without damage to the conductors or insulation.

## Self Adjusting Blade Wire Strippers



Self-adjusting blades close around the conductors of a wire, cutting insulation with no risk of damage or nicking.

# Magnet/Enamel wire stripper



## L2AS Bench Wire Stripper



For fast, clean removal of most film insulation from round wire, including enamel, Formvar, ML, armored polythermaleze, and epoxy.

### Specifications

Wire size.....8 to 4 AWG (3.25mm to 5.18mm $\phi$ )  
Max. strip length.....1-1/2" (38mm),  
1-5/16" (33.3mm) with strip length stop

### Ordering information

AR2071 (L2AS).....115V 60Hz  
AR2072 (L2AS).....220/240V 50Hz, European plug  
AR2073 (L2AS).....220/240V 50Hz, UK plug  
See page 27 for insert selection and optional parts.

## L2S Bench Wire Stripper



In addition to removing film insulation, the L2S can deflash wires and clean pins on transformers and coils.

### Specifications

Wire size.....29 to 8 AWG (0.28mm to 3.25mm $\phi$ )  
Max. strip length.....3-1/2" (89mm),  
1-5/16" (33.3mm) with strip length stop  
Component lead diameter.....0.0112" to 0.114" OD  
(0.28mm to 2.90mm $\phi$ )  
Max. cleaning length.....2-1/2" (63.5mm)  
Close-up cleaning.....flush with component body or length stop permits precise cleaning of only part of lead

### Ordering information

AR2051 (L2S).....115V 60Hz  
AR2052 (L2S).....220/240V 50Hz, European plug  
AR2053 (L2S).....220/240V 50Hz, UK plug  
See page 27 for insert selection and optional parts.

## L1 Magnet Wire Stripper



The L1 wire stripper removes film insulations including enamel, Formvar, ML, armored poly-thermaleze, and epoxy from round wires.

### Specifications

Max. material size ..... 29-13AWG(.28-1.82mm $\phi$ )  
Max. strip length ..... 3-1/2" (89mm)  
[1-5/16" (33.3mm) with strip length stop]  
Cleaning length .....Up to 2 1/2" (63.5mm)

### Ordering information

AR2041 (L1) .....115V, 60Hz  
AR2042 (L1) ..... 220V  
IR1823..... Chuck Assembly  
TR0630 ..... Collet Nut  
IR0516 ..... Guard  
PR3878 ..... Internal Collet  
IR8329 ..... Length Stop Rod  
Contact Eraser for Bushing Size.

## PL3S Portable Wire Stripper



The PL3S uses a high-speed rotating insert on a flexshaft to strip insulation from the surface of round wires.

### Specifications

Wire size.....29 to 14 AWG (0.28mm to 1.63mm $\phi$ )  
Max. strip length.....1-3/8" (34.9mm)  
no strip length stop available

### Ordering information

AR2061 (PL3S).....115V 60Hz  
AR2062 (PL3S).....220/240V 50Hz, European plug  
AR2063 (PL3S).....220/240V 50Hz, UK plug  
See page 27 for insert selection.



### R1S Magnet Wire Stripper



Fybrglass wheels make stripping quick and easy by softening wire insulation; wire wheels available for tougher applications.



#### Specifications

Max. wire size.....28 AWG (0.33mm $\phi$ )  
 Min. wire size.....45 AWG (0.046mm $\phi$ )  
 Max. strip length.....unlimited  
 Close-up stripping  
 A size wheels...within 5/16" (8mm) dep. on coil body size  
 B size wheels.....within 3/8" (10mm) of coil body  
 BEV size wheels.....within 5/16" (8mm) of coil body

#### Ordering information

AR2131 (R1S).....115V 60Hz  
 AR2132 (R1S).....220/240V 50Hz, European plug  
 AR2133 (R1S).....220/240V 50Hz, UK plug  
 Contact customer service or website for wheel selection.

### DV1 Wire Stripper with Dust Collector



This unit produces a stripped, polished surface with an integral dust collector.

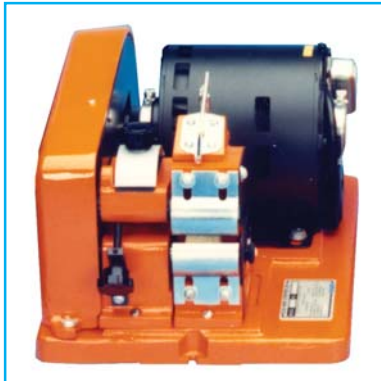
#### Specifications

Stripper type.....twin wheel stripper with dust collector  
 Max. wire size.....16 AWG (1.30mm $\phi$ )  
 Min. wire size.....35 AWG (0.14mm $\phi$ )  
 Max. square wire.....1/4" x 1/4" (6.35mm x 6.35mm)  
 Rectangular wire  
 max. wheel opening.....1/4" (6.35mm)  
 max. material width.....1" (25.4mm)  
 Strip length w. mini stop.....3/8" to 1-3/4" (9.5mm to 44mm)  
 Strip length w. reg. stop.....5/8" to 2-1/2" (16mm to 63mm)

#### Ordering information

AR0501 (DV1).....115V 60Hz  
 AR0502 (DV1).....220/240V 50Hz  
 Contact customer service or website for wheel selection.

### D1 Wheel Stripper



Like the DV1, Fybrglass or wire brush wheels produce a fast, high-quality strip.

#### Specifications

Stripper type.....twin wheel stripper with length stop  
 Max. wire size.....16 AWG (1.30mm $\phi$ )  
 Min. wire size.....35 AWG (0.14mm $\phi$ )  
 Max. square wire.....1/4" x 1/4" (6.35mm x 6.35mm)  
 Rectangular wire  
 max. thickness.....1/4" (6.35mm)  
 max. width.....1" (25.4mm)  
 Strip length w. mini stop..3/8" to 1-3/4" (9.5mm to 44mm)  
 Strip length w. reg. stop....5/8" to 2-1/2" (16mm to 63mm)

#### Ordering information

AR0401 (D1).....115V 60Hz  
 AR0402 (D1).....220/240V 50Hz  
 Contact customer service or website for wheel selection.

### D9 Twin Wheel Stripper



This unit features an offset head to allow unlimited strip lengths and window stripping.

#### Specifications

Stripper type.....twin wheel offset for unlimited strip length  
 Max. wire size.....16 AWG (1.30mm $\phi$ )  
 Min. wire size.....35 AWG (0.14mm $\phi$ )  
 Rectangular wire  
 max. wheel opening.....1/4" (6.35mm)  
 max. material width.....1" (25.4mm)  
 Strip length.....unlimited

#### Ordering information

AR0701 (D9).....115V 60Hz  
 AR0702 (D9).....220/240V 50Hz  
 Contact customer service or website for wheel selection.



### DCFV Wire Strippers with Vacuum



The hand piece of these strippers contains an internal dust collection system, removing debris as it strips insulation.

#### Specifications

##### Wire size

DCFV1.....35 to 15 AWG (0.14mm to 1.45mm $\phi$ )  
DCFV2/3.....32 to 12 AWG (0.20mm to 2.06mm $\phi$ )  
DCFV4.....29 to 9 AWG (0.28mm to 2.90mm $\phi$ )

##### Strip length

w/o strip length stop.....0 to 1-1/2" (64mm)  
w. strip length stop.....3/32" to 1-9/16" (2.38mm to 39.69mm)  
w. motor armature drilled...infinite; max. wire size 13 AWG (1.83mm $\phi$ )

Power source.....multi-voltage 115/220/240V 50/60Hz

#### Ordering information

AR3301 (DCFV1).....stripper with vacuum in hand unit, power unit and bench holder  
AR3401 (DCFV2/3).....stripper with vacuum in hand unit, power unit and bench holder  
AR3431 (DCFV4).....stripper with vacuum in hand unit, power unit and bench holder  
AR3321 (DCFV1L).....hand piece only, no power unit  
AR3421 (DCFV2/3L).....hand piece only, no power unit  
AR3441 (DCFV4L).....hand piece only, no power unit  
IR7000....multi-voltage power unit and bench holder only

### DCFR Stripper for Magnet Wire



Uses a rotating carbide rasp head to strip square, rectangular, flat magnet or enamel wire insulation.

#### Specifications

Wire size.....up to max. square section of 3/4" (19mm)

Strip length.....unlimited

#### Ordering information

##### Single voltage units

AR5341 (DCFAR).....stripper and power unit, 110V  
AR5342 (DCFAR).....stripper and power unit, 220V

##### Battery operated units

AR5441 (DCFBR).....stripper, battery operated, charger 110V  
AR5442 (DCFBR).....stripper, battery operated, charger 220V

##### Multi-voltage units

AR4801 (DCFR).....hand held stripper with power unit  
AR4821 (DCFR).....hand piece only, no power unit  
IR7000....multi-voltage power unit and bench holder only

### E200 & E300 Heavy Duty Wire Strippers



Heavy duty wire strippers for demanding applications and production line stripping of large magnet, enamel and film insulated wires.

#### Specifications

Wire size.....20 to 1 AWG (0.81mm to 7.34mm $\phi$ )

Max. square wire size.....1/4" x 1/4" (6.35mm x 6.35mm)

##### Rectangular wire

max. wheel opening.....1/4" (6.35mm)

max. material width.....2" (50.8mm)

Strip length w. mini stop.....1/2" to 2-3/4" (12.7mm to 69mm)

Strip length w. reg. stop.....1" to 3-1/2" (25.4mm to 89mm)

Dust takeoff port.....1-5/8" ID (42mm $\phi$ ), 2" OD (51mm $\phi$ )

#### Ordering information

AR1111 (E200).....115V 60Hz, counter-rotating wheels

AR1112 (E200).....230V 50Hz, counter-rotating wheels

AR1121 (E300).....115V 60Hz, same direction rotating wheels

AR1122 (E300).....230V 50Hz, same direction rotating wheels

#### Optional Parts

BR1501.....DC2 dust collector

Contact customer service or website for wheel selection.

### Specifications

Wire size.....32 to 4 AWG (0.20 to 5.18mmø)  
 Square & rectangular wire.....up to 1/4" x 3/4"  
 (6.35mm x 19.05mm)  
 Strip length.....unlimited  
 Hose .....6' (1.8M) of 3/8" OD (9.5mmø) air hose  
 Power.....15,000 RPM, air motor  
 requiring up to 90 PSI at 32 CFM

### Ordering information

AR4000 (PD9).....air operated stripper

### Optional Parts

PR0003.....air filter, regulator and lubricator  
 PR3625.....six foot air hose with quick disconnect  
*Contact customer service or website for wheel selection.*

## PD9 Portable Air-Operated Stripper



This compact, lightweight tool quickly strips film type insulation from round and rectangular wires.

### Specifications

Wire size for magnet wire stripping  
 max.....28 AWG (0.33mmø)  
 min.....41 AWG (0.071mmø)  
 Strip length.....unlimited, no length stop available  
 Close up stripping.....within 5/16" (8mm) of coil body  
 Power.....battery pack, 110V trickle charger

### Ordering information

AR7900 (ST1).....cleaner/magnet wire stripper  
*Contact customer service or website for wheel selection.*

## ST1 Portable Magnet Wire Stripper



This lightweight, two pound, battery-operated tool can strip fine gauge magnet wire on the go.

### Specifications

Wire size.....32 to 2 AWG (0.20mm to 6.53mmø)  
 Square wire.....up to 1/4" x 1/4" (6.35mm x 6.35mm)  
 Rectangular wire  
 max. wheel opening.....1/4" (6.35mm)  
 max. material width.....5/8" (15.8mm)  
 Strip length.....unlimited

### Ordering information

ER0801 (PD2S).....115V 60Hz  
 ER0802 (PD2S).....220/240V 50Hz  
*Contact customer service or website for wheel selection.*

## PD2S Hand Held Wire Stripper



Two high-speed rotating wheels strip round and rectangular magnet wires on transformers, motors, armatures, and coils.

### IK10 Inline Magnet Wire Stripper

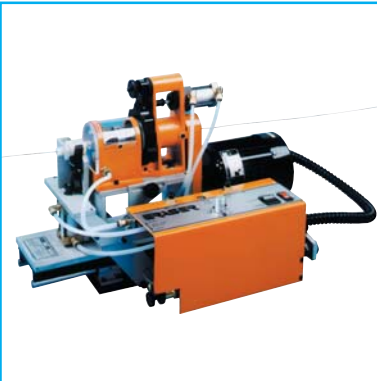


Fully programmable, this advanced magnet wire stripper can be used in-line for coil and spring winding equipment.

#### Specifications

Strip length.....0.01" to 4.00" (0.25mm to 101mm)  
 Material size.....28 to 11 AWG (0.33mm to 2.31mm $\phi$ )  
 Feed rate.....five selectable feed rates  
 Batching.....up to five programmable batches  
 Blades.....carbide tipped blades (diamond tipped available)  
 Interface.contact closure (start signal) cycle complete signal  
 Ordering information  
 AR0991 (IK10).....115V 60Hz single phase, 90 PSI  
 AR0992 (IK10).....230V 50Hz European plug, 90 PSI  
 AR0993 (IK10).....230V 50Hz UK Plug, 90 PSI  
 See page 27 for blade selection.

### IK8 Inline Magnet Wire Stripper



Fast and effective, this fully automatic machine window strips wire for a wide range of applications such as coils, chokes and springs.

#### Specifications

Strip length.....up to 4" (102mm)  
 Wire size.....28 to 11 AWG (0.33mm to 2.31mm $\phi$ )  
 dep. on blades used  
 Cycle time.....max. 60/minute  
 dep. on strip length, wire size and insulation type  
 Dust take-off.....1-13/16" (46mm) ID, 2-1/16" OD (52mm $\phi$ )  
**Ordering information**  
 AR5401 (IK8).....115V 60Hz  
 AR5402 (IK8).....220/240V 50Hz  
 See page 27 for blade selection.

### K8A Rotary Blade Stripper



The air-operated K8A uses a four-blade head to strip either extruded wires, or magnet and enamel wires.

#### Specifications

Extruded wires and built-up insulation  
 Wire size.....38 to 8 AWG (0.10mm to 3.25mm $\phi$ )  
 or up to 3/8" OD (9.5mm $\phi$ )  
 Strip length.....up to 1-3/8" (34mm)  
 Film insulated and magnet wires  
 Wire size.....28 to 11 AWG (0.33mm to 2.31mm $\phi$ )  
 Strip length.....up to 1-3/8" (34mm),  
 infinite strip lengths possible if length stop is removed  
**Ordering information**  
 AR1641 (K8A).....115V 60Hz, 90 PSI  
 AR1642 (K8A).....220/240V 50Hz, European plug, 90 PSI  
 AR1643 (K8A).....220/240V 50Hz, UK plug, 90 PSI  
 See page 27 for blade selection.

### K8B Rotary Blade Stripper



Foot-pedal operated, the K8B offers adjustable blade depth, pressure and strip lengths for maximum efficiency.

#### Specifications

Extruded wires and built-up insulation  
 Wire size.....38 to 8 AWG (0.10mm to 3.25mm $\phi$ )  
 or up to 3/8" OD (9.5mm $\phi$ )  
 Strip length.....up to 1-3/8" (34mm)  
 Film insulated and magnet wires  
 Wire size.....28 to 11 AWG (0.33mm to 2.31mm $\phi$ )  
 Strip length.....up to 1-3/8" (34mm); infinite strip lengths or window strips possible if length stop is removed  
**Ordering information**  
 AR1651 (K8B).....115V 60Hz  
 AR1652 (K8B).....220/240V 50Hz, European plug  
 AR1653 (K8B).....220/240V 50Hz, UK plug  
 See page 27 for blade selection.

## Model 824

### Cutter head (one required)

RI3040.....	for use on single level semi-rigid
RI3041.....	for use on two level semi-rigid
RI3043.....	for use on two level coax
RI3042.....	for use on single level coax
RI3044.....	for use on two level coax (braid exposed)
RI3045.....	for use on three level coax
RI2054.....	for use on four level coax
RI2047.....	for strip length of 0.070" (1.78mm) or less between blades
RI2056.....	for UV or V size hole
RI2060.....	for semi-rigid cable strip lengths of 0.070" (1.78mm) or less between blades

### Optional Parts

RI5000.....	additional standard battery w/o charger
RI2040.....	additional standard battery w/110V trickle charger
RI0500.....	extended range battery w/110V trickle charger
RI2030.....	AC to DC power supply 115V 60Hz
RI2032.....	AC to DC power supply 220/230V 50Hz, European plug
RI2033.....	AC to DC power supply 220/230V 50Hz, UK plug
RP5710.....	trickle charger, 110V 60Hz
RP2036.....	trickle charger, European plug
RI0061.....	rapid charger, 110V 60Hz
RI0062.....	rapid charger, 220V 50Hz
RI6711.....	replacement blade

## Model 1246

### Cutter head (one required)

RI4040.....	for use on single level semi-rigid
RI4041.....	for use on two level semi-rigid
RI4042.....	for use on single level coax
RI4043.....	for use on two level coax
RI4044.....	for use on two level coax (braid exposed)
RI4045.....	for use on three level coax
RI2059.....	for use on four level coax
RI2057.....	for strip length of 0.070" (1.78mm) or less between blades
RI2053.....	for UV or V size hole
RI2061.....	for semi-rigid cable strip lengths of 0.070" (1.78mm) or less between blades

### Optional Parts

RI9113.....	pin vise to hold semi-rigid cable when stripping
RI1040.....	quick release coupling
RI6711.....	replacement blade

## HTS1 & HTS2 Thermal Wire Strippers

### Optional Parts

IR5023.....	replacement set un-notched elements
IR1399.....	small die element set (22, 24, 26, 28, 30AWG)
IR1405.....	large die element set (14, 16, 18, 20AWG)
AR6701.....	FE1 fume extractor, 115V 50/60Hz
AR6702.....	FE1 fume extractor, 230V 50/60Hz
AA0004.....	brass Eraser brush to clean elements

## LS10, LSR10, LSS10, LSA20 & LSAR20

### Die blade selection (one required)

	<i>Diameter of die</i>
IR1702.....	parallel blades
IR1703.....	< 0.030" OD (< 0.76mmø)
IR1704.....	0.029-0.042" OD (0.74-1.07mmø)
IR1705.....	0.043-0.050" OD (1.09-1.27mmø)
IR1706.....	0.051-0.062" OD ( 1.30-1.57mmø)
IR1707.....	0.063-0.074" OD ( 1.60-1.88mmø)
IR1708.....	0.075-0.102" OD (1.91-2.59mmø)
IR1709.....	0.103-0.123" OD (2.62-3.12mmø)
IR1710.....	0.124-0.142" OD (3.15-3.61mmø)
IR1711.....	0.143-0.183" OD (3.63-4.65mmø)
IR1712.....	0.184-0.208" OD (4.67-5.28mmø)
IR1713.....	0.209-0.237" OD (5.31-6.02mmø)
IR1714.....	0.238-0.285" OD (6.05-7.24mmø)
IR1715.....	0.286-0.327" OD (7.26-8.31mmø)
IR1716.....	0.328-0.370" OD (8.33-9.40mmø)
IR1717.....	0.371-0.416" OD (9.42-10.57mmø)
IR1718.....	0.417-0.448" OD (10.59-11.38mmø)
IR1719.....	0.449-0.495" OD (11.40-12.57mmø)
IR1720.....	0.496-0.558" OD (12.60-14.17mmø)
IR1721.....	0.559-0.620" OD (14.20-15.75mmø)
IR1722.....	0.621-0.714" OD (15.77-18.14mmø)
IR1723.....	0.715-0.792" OD (18.16-20.12mmø)
IR1724.....	0.793-0.870" OD (20.14-22.10mmø)
IR1725.....	0.871-0.948" OD (22.12-24.08mmø)
IR1726.....	0.949-1.026" OD (24.10-26.06mmø)
IR1727.....	1.027-1.120" OD (26.09-28.45mmø)
IR1728.....	custom blade set

### Optional Parts

IR8371.....	table and clamp assembly
IR1507.....	length stop

## ST1

### Optional Parts

RI5000.....	additional standard battery w/o charger
RI2040.....	additional standard battery w/110V trickle charger
RI0500.....	extended range battery w/110V trickle charger
RI2030.....	AC to DC power supply 115V 60Hz
RI2032.....	AC to DC power supply 220/230V 50Hz, with European plug
RI2033.....	AC to DC power supply 220/230V 50Hz UK plug
RP5710.....	trickle charger, 110V 60Hz
RP2036.....	trickle charger, European plug
RI0061.....	rapid charger, 110V 60Hz
RI0062.....	rapid charger, 220V 50Hz



## C100S

### Wire guide selection (one required)

	<i>Wire size</i>
IR8701.....	0.233-0.216" (5.92-5.49mm)
IR8702.....	0.215-0.208" (5.46-5.28mm)
IR8703.....	0.207-0.204" (5.26-5.18mm)
IR8704.....	0.203-0.201" (5.16-5.11mm)
IR8705.....	0.200-0.196" (5.08-4.98mm)
IR8706.....	0.195-0.191" (4.95-4.85mm)
IR8707.....	0.190-0.186" (4.83-4.72mm)
IR8708.....	0.185-0.181" (4.70-4.60mm)
IR8709.....	0.180-0.175" (4.57-4.45mm)
IR8710.....	0.174-0.168" (4.42-4.27mm)
IR8711.....	0.167-0.164" (4.24-4.17mm)
IR8712.....	0.163-0.156" (4.14-3.96mm)
IR8713.....	0.155-0.151" (3.94-3.84mm)
IR8714.....	0.150-0.144" (3.81-3.66mm)
IR8715.....	0.143-0.139" (3.63-3.53mm)
IR8716.....	0.138-0.135" (3.51-3.43mm)
IR8717.....	0.134-0.131" (3.40-3.33mm)
IR8718.....	0.130-0.120" (3.30-3.05mm)
IR8719.....	0.119-0.115" (3.02-2.92mm)
IR8720.....	0.114-0.111" (2.90-2.82mm)
IR8721.....	0.110-0.106" (2.79-2.69mm)
IR8722.....	0.105-0.101" (2.67-2.57mm)
IR8723.....	0.100-0.096" (2.54-2.44mm)
IR8724.....	0.095-0.091" (2.41-2.31mm)
IR8725.....	0.090-0.084" (2.29-2.13mm)
IR8726.....	0.083-0.077" (2.11-1.96mm)
IR8727.....	0.076-0.073" (1.93-1.85mm)
IR8728.....	0.072-0.068" (1.83-1.73mm)
IR8729.....	0.067-0.062" (1.70-1.57mm)
IR8730.....	0.061-0.057" (1.55-1.45mm)
IR8731.....	0.056-0.050" (1.42-1.27mm)
IR8732.....	0.049-0.041" (1.24-1.04mm)
IR8733.....	0.040-0.037" (1.02-0.94mm)
IR8734.....	0.036-0.034" (0.91-0.86mm)
IR8735.....	0.033-0.030" (0.84-0.76mm)
IR8736.....	0.029-0.026" (0.74-0.66mm)
IR8737.....	0.025-0.020" (0.64-0.51mm)

### Optional parts

IR8190.....	complete set of 37 wire guides in plastic box
IR4655.....	standard 50° blade with pivot pin
IR4660.....	blade for thin or film insulation
IR7978.....	special short blade for very fine fragile wires
IR8192.....	short strip length stop

## K8A & K8B

### Blade selection (one required)

IR0318.....	strips wire 38-8 AWG (0.10-3.25mmØ) for hard or thin insulation
IR0319.....	strips wire 11-15 AWG (2.31-1.45mmØ)
IR0321.....	strips wire 16-20 AWG (1.30-0.81mmØ)
IR0322.....	strips wire 21-24 AWG (0.71-0.51mmØ)
IR0323.....	strips wire 25-28 AWG (0.46-0.33mmØ)
IR0324.....	custom stripping blades, send material for sizing
IR0337.....	strips wire 38-8 AWG (0.10-3.25mmØ) or up to 3/8" OD (9.5mmØ) for thick or slippery insulation
NR3210.....	custom diamond tipped blades

### Optional Parts

PR0003.....	air filter, regulator and lubricator
-------------	--------------------------------------

## C200 & C300

### Wire guide selection (one required)

	<i>Outside diameter of wire/cable</i>
IR2301.....	0.022-0.020" OD (0.56-0.51mmØ)
IR2302.....	0.029-0.023" OD (0.74-0.58mmØ)
IR2303.....	0.036-0.030" OD (0.91-0.76mmØ)
IR2304.....	0.046-0.037" OD (1.17-0.94mmØ)
IR2305.....	0.056-0.047" OD (1.42-1.19mmØ)
IR2306.....	0.064-0.057" OD (1.63-1.45mmØ)
IR2307.....	0.072-0.065" OD (1.83-1.65mmØ)
IR2308.....	0.083-0.073" OD (2.11-1.85mmØ)
IR2309.....	0.095-0.984" OD (2.41-2.13mmØ)
IR2310.....	0.105-0.096" OD (2.67-2.44mmØ)
IR2311.....	0.119-0.106" OD (3.02-2.69mmØ)
IR2312.....	0.130-0.120" OD (3.30-3.05mmØ)
IR2313.....	0.143-0.131" OD (3.63-3.33mmØ)
IR2314.....	0.155-0.144" OD (3.94-3.66mmØ)
IR2315.....	0.167-0.156" OD (4.24-3.96mmØ)
IR2316.....	0.185-0.168" OD (4.70-4.27mmØ)
IR2317.....	0.199-0.186" OD (5.05-4.72mmØ)
IR2318.....	0.215-0.200" OD (5.46-5.08mmØ)
IR2319.....	0.228-0.216" OD (5.79-5.49mmØ)
IR2320.....	0.240-0.229" OD (6.10-5.82mmØ)
IR2321.....	0.251-0.241" OD (6.38-6.12mmØ)
IR2322.....	0.260-0.252" OD (6.60-6.40mmØ)

### Optional Parts

IR0085.....	Set of all 22 wire guides
IR1071.....	titanium nitrate coated replacement blade
IR8631.....	set of two replacement carbide blades
IR8632.....	set of six replacement carbide blades
IR0703.....	complete faceplate assembly

## IK8 & IK10

### Blade selection (one required)

IR0319.....	strips wire 11-15 AWG (2.31-1.45mmØ)
IR0321.....	strips wire 16-20 AWG (1.30-0.81mmØ)
IR0322.....	strips wire 21-24 AWG (0.71-0.51mmØ)
IR0323.....	strips wire 25-28 AWG (0.46-0.33mmØ)
IR0324.....	custom stripping blades, send material for sizing
NR3210.....	custom diamond tipped blades

### Optional Parts

PR0003.....	air filter, regulator and lubricator
-------------	--------------------------------------

## L2S, L2AS, L4A, PL3S Insert selection (one required)

Wire Size	Standard Grade Inserts			Heavy Duty Grade Inserts			Machine Used On
	Concave Face	Flat Face	Bullet Nose	Concave Face	Flat Face	Bullet Nose	
29-24 AWG (0.28-0.51mmø)	L30SC-IR1931	L30SF-IR1941	L30BF-IR1971	L30HC-IR1951	L30HF-IR1961	L30HB-IR1981	L1, L2S, PL3S, L4
24-20 AWG (0.51-0.81mmø)	L35SC-IR1932	L35SF-IR1942	L35BF-IR1972	L35HC-IR1952	L35HF-IR1962	L35HB-IR1982	
20-16 AWG (0.81-1.30mmø)	L31SC-IR1933	L31SF-IR1943	L31BF-IR1973	L31HC-IR1953	L31HF-IR1963	L31HB-IR1983	
15-13 AWG (1.45-1.83mmø)	L33SC-IR1934	L33SF-IR1944	L33BF-IR1974	L33HC-IR1954	L33HF-IR1964	L33HB-IR1984	L2S, L4
13-11 AWG (1.83-2.31mmø)	L38SC-IR1935	L38SF-IR1945	L38BF-IR1975	L38HC-IR1955	L38HF-IR1965	L38HB-IR1985	
11-9 AWG (2.31-2.90mmø)	L34SC-IR1936	L34SF-IR1946	L34BF-IR1976	L34HC-IR1956	L34HF-IR1966	L34HB-IR1986	
9-8 AWG (2.90-3.25mmø)	L37SC-IR1937	L37SF-IR1947	N/A	L37HC-IR1957	L37HF-IR1967	N/A	L2AS, L4A, IR0106
8-6 AWG (3.25-4.11mmø)	L39SC-IR1938	L39SF-IR1948	N/A	L39HC-IR1958	L39HF-IR1968	N/A	
5-4 AWG (4.62-5.18mmø)	L40SC-IR1939	L40SF-IR1949	N/A	L40HC-IR1959	L40HF-IR1969	N/A	

Wire Size	Carbide Tipped Inserts			Diamond Tipped Insert	Machine Used On
	Concave Face	Flat Face	Bullet Nose	Flat Face	
29-24 AWG (0.28-0.51mmø)	L30CC-IR9007	L30CF-IR9008	L30CB-IR9009	L30DF-IR9010	L1, L2S, PL3S
24-20 AWG (0.51-0.81mmø)	L35CC-IR9017	L35CF-IR9018	L35CB-IR9019	L35DF-IR9020	
20-16 AWG (0.81-1.30mmø)	L31CC-IR9027	L31CF-IR9028	L31CB-IR9029	L31DF-IR9030	
15-13 AWG (1.45-1.83mmø)	L33CC-IR9037	L33CF-IR9038	L33CB-IR9039	L33DF-IR9040	L2S, IR0104, L4
13-11 AWG (1.83-2.31mmø)	L38CC-IR9047	L38CF-IR9048	L38CB-IR9049	L38DF-IR9050	
11-9 AWG (2.31-2.90mmø)	L34CC-IR9057	L34CF-IR9058	L34CB-IR9059	L34DF-IR9060	
9-8 AWG (2.90-3.25mmø)	N/A	N/A	N/A	N/A	L2AS, L4A, IR0106
8-6 AWG (3.25-4.11mmø)	N/A	N/A	N/A	N/A	
5-4 AWG (4.62-5.18mmø)	N/A	N/A	N/A	N/A	

### L Series Optional Parts

#### L2S, L4

IR0104.....chuck assembly for 3/8" OD (9.52mmø)

#### L2AS, L4A

IR0106.....chuck assembly for 1/2" OD (12.7mmø)

#### L4, L4A

PR3623.....six-foot air hose with quick disconnect

# CUTTER HEAD ASSIGNMENT FORM

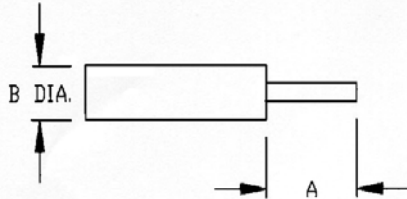
(ATTACHMENT)

For: Bench   
 Hand

To Process your stripping head order accurately please provide the following:

- The actual strip dimensions, the outside diameter (O.D.) of your cable and any tolerance requirements (if applicable)
- Use the appropriate diagram based on the number of strip levels required
- Specify inch or metric
- Please fill out your company's name, sign and date the form and fax it to 315-454-3090

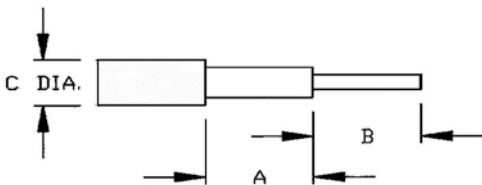
If you have any questions concerning this form, please contact The Eraser Company at **800-724-0594**



\*A = \_\_\_\_\_  
 \*B = \_\_\_\_\_ Dia.

**ONE LEVEL  
 COAX OR  
 SEMI-RIGID**

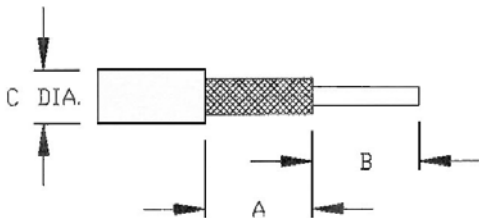
\*Strip Dimensions



\*A = \_\_\_\_\_  
 \*B = \_\_\_\_\_  
 \*C = \_\_\_\_\_ Dia.

**TWO LEVEL  
 (DIELECTRIC EXPOSED)  
 COAX OR SEMI-RIGID**

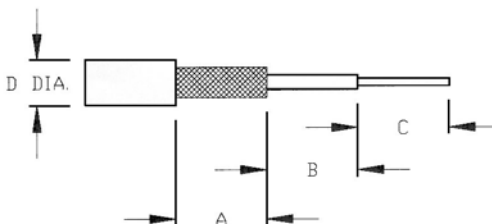
\*Strip Dimensions



\*A = \_\_\_\_\_  
 \*B = \_\_\_\_\_  
 \*C = \_\_\_\_\_ Dia.

**TWO LEVEL  
 (BRAID EXPOSED)  
 COAX**

\*Strip Dimensions



\*A = \_\_\_\_\_  
 \*B = \_\_\_\_\_  
 \*C = \_\_\_\_\_  
 \*D = \_\_\_\_\_ Dia.

**THREE LEVEL  
 COAX OR JACKETED  
 SEMI-RIGID**

\*Strip Dimensions

Tolerance Required = +/- . \_\_\_\_\_ /Inch or Metric (Circle One)

Company Name: \_\_\_\_\_

Customer Signature: \_\_\_\_\_

Date: \_\_\_\_\_

**The Eraser Company, Inc.**  
 PO Box 4961 / Oliva Drive  
 Syracuse, NY 13221, USA  
 Phone: (315) 454-3237 / Fax: (315) 454-3090  
 Website: www.eraser.com  
 E-mail: info@eraser.com

From our patented Glo-Ring™ infrared heating technology to a wide range of ceramic heating units for industrial applications, Eraser offers a comprehensive line of heating equipment. All provide effective heating performance that is quick, quiet and energy efficient. The Glo-Ring is perfect for heat shrinking, plastic tube bending, soldering, adhesive curing, solder preforms, and butt welding.

## Triple Element Bench Glo-Ring



For shrinking long length of heat shrink tubing and other applications, this bench Glo-Ring has roller guides to keep the work piece centered within the heating elements.

### Specifications

Heat source.....quartz encapsulated heating elements  
 Temperature range.....adjustable to 1,500°F (815°C)  
 Heating elements.....open and close around material using hand switch or foot pedal

### Ordering information

AH2711 (Triple Element Glo-Ring).....115V 60Hz  
 AH2712 (Triple Element Glo-Ring).....220/240V 50Hz  
 IH0129 (Foot activation switch)...For bench Glo-Ring units

*Elements and guards sold separately*

## Single Element Bench Glo-Ring



This unit is ideal for smaller production applications that require the stability and convenience of a bench machine. Perfect for clean room use.

### Specifications

Heat source.....quartz encapsulated heating elements  
 Temperature range.....adjustable to 1,500°F (815°C)  
 Heating elements.....open and close around material using hand switch or foot pedal  
 (see "Continuous Elements" section for size options)

### Ordering information

AH2401 (Single Element Glo-Ring).....110V 60Hz  
 AH2402 (Single Element Glo-Ring).....220/240V 50Hz,  
 European plug  
 AH2403 (Single Element Glo-Ring).....220/240V 50Hz,  
 U.K. plug  
 IH0129 (Foot activation switch)...For bench Glo-Ring units

*Elements and guards sold separately*

## Hand-Held Glo-Ring



Utilizing the same Glo-Ring technology as the triple- and single-element units, this portable tool can be taken to the production site for added convenience.

### Specifications

Heat source.....quartz encapsulated heating elements  
 Temperature range.....adjustable to 1,500°F (815°C)  
 Heating elements.....open and close around material using hand switch  
 (see "Continuous Elements" section for size options)

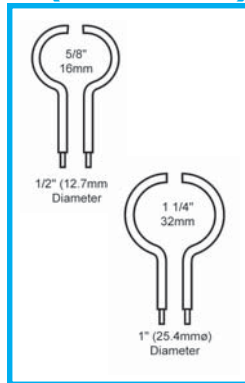
### Ordering information

AH2001 (Hand-Held Glo-Ring).....115V 50/60Hz,  
 with temp. control  
 AH2002 (Hand-Held Glo-Ring).....220/240V 50/60Hz,  
 European plug, with temp. control  
 AH2003 (Hand-Held Glo-Ring).....220/240V 50/60Hz,  
 U.K. plug, with temp. control  
 AH1901 (Hand-Held Glo-Ring).....115V 50/60Hz  
 AH1902 (Hand-Held Glo-Ring).....220/240V 50/60Hz,  
 European plug  
 AH1903 (Hand-Held Glo-Ring).....220/240V 50/60Hz,  
 U.K. plug

*Elements and guards sold separately*

Available in various configurations, all Glo-Ring elements are designed for long-life and optimum performance. Intermittent are for hand-unit use; continuous for bench models.

### Elements & Wire Guards (1/2" & 1")



#### Ordering information

*Round, continuous, one pair*

IH6515.....1/2" (12.7mm), 115V 50/60Hz

IH6516.....1/2" (12.7mm), 220/240V 50/60Hz

IH5511.....1" (25.4mm), 115V 50/60Hz

IH5521.....1" (25.4mm), 220/240V 50/60Hz

*Round, intermittent, one pair*

IH3511.....1/2" (12.7mm), 115V 50/60Hz

IH6514.....1/2" (12.7mm), 220/240V 50/60Hz

IH4511.....1" (25.4mm), 115V 50/60Hz

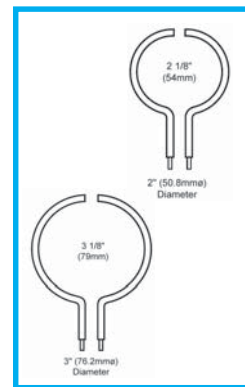
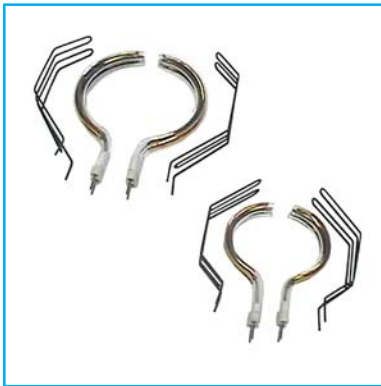
IH4521.....1" (25.4mm), 220/240V 50/60Hz

*Round, wire guards, one pair*

IH6517.....for use with 1/2" element

IH3551.....for use with 1" element

### Elements & Wire Guards (2" & 3")



#### Ordering information

IH5512.....2" (50.8mm), 115V 50/60Hz

IH5522.....2" (50.8mm), 220/240V 50/60Hz

IH5513.....3" (76.2mm), 115V 50/60Hz

IH5523.....3" (76.2mm), 220/240V 50/60Hz

*Round, intermittent, one pair*

IH4512.....2" (50.8mm), 115V 50/60Hz

IH4522.....2" (50.8mm), 220/240V 50/60Hz

IH4513.....3" (76.2mm), 115V 50/60Hz

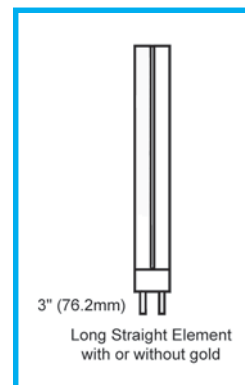
IH4523.....3" (76.2mm), 220/240V 50/60Hz

*Round, wire guards, one pair*

IH3552.....for use with 2" element

IH3553.....for use with 3" element

### Elements & Wire Guards (3" Straight)



#### Ordering information

*Straight, intermittent, one pair*

IH0130.....3" (76.2mm) without gold, 115V 50/60Hz

IH0133.....3" (76.2mm) without gold, 220/240V 50/60Hz

IH0131.....3" (76.2mm) with gold, 115V 50/60Hz

IH0134.....3" (76.2mm) with gold, 220/240V 50/60Hz

*Guards not available for straight elements.*



## HL2 Lux-Therm Portable Infrared Heater



A high-intensity quartz lamp infrared heater perfect as an all-purpose shop, industrial, and production heat source, for a wide range of uses.

### Specifications

Output and heat source.....Two "snap-in" 500W high-intensity tubular quartz heat lamp assemblies of 10" (254mm) overall length  
 Rated average life.....5,000 hours (lamp assemblies must be in horizontal position)  
 Response time.....less than 5 seconds  
 Surface temperature.....680°F (360°F) within 150 seconds  
 Heat ranges.....low (one lamp activated) high (two lamps activated)

### Ordering information

AK1101 (HL2).....120V 50/60Hz  
 AK1102 (HL2).....230V 50/60Hz

### Optional parts

IK0038.....bench stand  
 BK0001.....floor mounting tripod  
 IK0015.....heat lamp assembly, 120V 50/60Hz  
 IK0017.....heat lamp assembly, 220/240V 50/60Hz

## Lux-Therm Heating Modules



All Lux-Therm high-intensity infrared heating modules provide a practical solution for practically any infrared heating application.

### Specifications

Filament type.....tungsten  
 Heating performance.....reaches a temperature of 4,000°F (2,204°C) within 1.5 seconds

### Ordering information

AK0010.....(10.5" [267mm] long), gold reflector  
 AK0050.....(10.5" [267mm] long), silver reflector  
 AK0013.....(13.625" [346mm] long), gold reflector  
 AK0051.....(13.625" [346mm] long), silver reflector  
 AK0021.....(21.5" [546mm] long), gold reflector  
 AK0052.....(21.5" [546mm] long), silver reflector

Part #	AMP Rating	No. of Units	
		115V 50/60Hz	230V 50/60Hz
IK0015	4.3	5	
IK0011	10.4	2	
IK0017	2.3		10
IK0021	4.2		5
IK0030	8.3		3
IK0027	6.7		3
CK0001	9	2	
CK0003	9	2	
CK0005	14	1	
CK0002	4.5		5
CK0004	4.5		5
CK0006	6.8		3
AK1101	8.3	2	4

The chart shows the combinations of Luxtherm lamps that can be controlled simultaneously with either 1 LX25 (AK0031) or 1 LXC1 (AK0041) 115V 50/60Hz and 230V 50/60Hz.

Eraser offers simple but versatile tools and machines for component cutting, bending, forming and counting. From hand-operated tools to automatic machines, they are easy to set up and use. Five different sizes of printed circuit board holders are available to accommodate the smallest boards or several boards for repair and rework.

### WY40 Printed Circuit Board Holder



All board holders feature adjustable mounting rails, two moving rails and a fixed center rail to permit two rows of circuits to be held.

#### Specifications

Standard less central rail	19 3/4" x 13 7/8" (502mm x 352mm)
Standard with central rail	1 row 19 3/4" x 6 1/2" (502mm x 165mm) 1 row 19 3/4" x 7 1/8" (502mm x 181mm)
With Two Additional Rails	2 rows 19 3/4" x 3 1/8" (502mm x 79mm) 2 rows 19 3/4" x 3.44" (502mm x 87mm)
With Four Additional Rails	3 rows 19 3/4" x 2" (502mm x 51mm) 3 rows 19 3/4" x 2.2" (502mm x 56mm)

#### Ordering information

DF0014 (WY40).....PCB Assembly Holder  
IW0144.....One additional moving rail kit  
CM0088.....Replacement standard foam for lid  
CR1327.....Conductive foam for lid

### WY30 Printed Circuit Board Holder



Chemically treated antistatic foam is standard on all board holders. For static sensitive components, conductive foam is available as an option.

#### Specifications

Standard less central rail	29.5" x 9" (750mm x 229mm)
Standard with central rail	1 row 29.5" x 4 1/2" (750mm x 114mm) 1 row 29.5" x 4" (750mm x 102mm)
With Two Additional Rails	2 rows 29.5" x 2 1/8" (750mm x 54mm) 2 rows 29.5" x 1.87" (750mm x 47mm)

#### Ordering information

DF0013 (WY30).....PCB Assembly Holder  
IW0146.....One additional moving rail kit  
CM0141.....Replacement standard foam for lid  
CR0495.....Conductive foam for lid

### WY20 Printed Circuit Board Holder



Board holders are modular in construction and are available in four different sizes.

#### Specifications

Standard less central rail	19 3/4" x 9" (502mm x 229mm)
Standard with central rail	1 row 19 3/4" x 4" (502mm x 102mm) 1 row 19 3/4" x 4 1/2" (502mm x 114mm)
With Two Additional Rails	2 rows 19 3/4" x 2-1/8" (502mm x 54mm) 2 rows 19 3/4" x 1.87" (502mm x 47mm)

#### Ordering information

DF0012 (WY20).....PCB Assembly Holder  
with central and two moving rails  
IW0144.....One additional moving rail kit  
CM0087.....Replacement standard foam for lid  
CR1326.....Conductive foam for lid

### WY10 Printed Circuit Board Holder



Several circuits may be mounted in holders and assembled at one time.

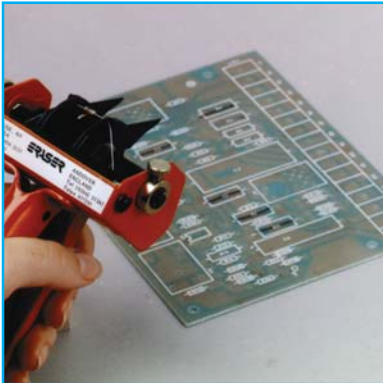
#### Specifications

Standard less central rail	10 7/8" x 4 1/2" (276mm x 222mm)
Standard with central rail	1 row 10 7/8" x 4 1/2" (276mm x 114mm) 1 row 10 7/8" x 3.96" (276mm x 100mm)
With two additional rails	2 rows 10 7/8" x 2 1/8" (276mm x 54mm) 2 rows 10 7/8" x 1.84" (276mm x 47mm)

#### Ordering information

DF0011 (WY10).....PCB Assembly Holder with central and two moving rails  
 IW0143.....One additional moving rail kit  
 CM0086.....Replacement standard foam for lid  
 CR1325.....Conductive foam for lid

### PR/2 Component Lead Bender



A tool for bending at 90°, the legs of axial lead components prior to insertion in the PCB. Pointers on the tool are set to hole spacing by the turn of a knob which simultaneously sets the forming dies.

#### Specifications

Max. Bend Distance.....0.47"-1.97" (12mm-50mm)  
 Min. Bend Distance from Component.....0.078" (2.00mm)  
 Maximum Copper Lead Diameter.....0.45" (1.14mmø)

#### Ordering Information

DF0001(PR/2).....Lead bending tool

Designed to work with a wide range of wire types and sizes, Eraser's line of twisters offers the highest quality and durability available. Whether used for an intensive industrial application or in a lighter production environment, our machines deliver consistent, quality twists each time.

### WT20 Automatic Wire Twister



Whether a precut or stripped wire, this automatic twister will twist together two or more wires of any length.

#### Specifications

Max. dia. of all wires.....1/4" OD (6.35mmø)  
not exceeding two stranded 16 AWG (1.3mmø) wires  
Max. twist length.....up to 20' (6.096M)  
Max. twist quantity.....9,999 twists per cycle  
Twist speed.....variable up to 26 turns per second

#### Ordering information

AR4220 (WT20).....115V 50/60Hz

#### Optional Parts

IR8242...power pack enables operation on 220/240V 50/60Hz

### WT30 Automatic Wire Twister



This twister is designed to handle smaller, slippery wires and bundles.

#### Specifications

Max. dia. of all wires..... 1/8" OD (3mmø)  
not exceeding two stranded .052" OD (1.3mmø) wires  
Max. twist length.....20' (6.096M)  
Max. twist quantity.....9,999 twists per cycle  
Twist speed.....variable up to 26 turns per second

#### Ordering information

AR4230 (WT30).....115V 50/60Hz

#### Optional Parts

IR8242.....power pack enables operation on 220/240V 50/60Hz

### WT40 Automatic Wire Twister



Using holders that are custom made for each application, the WT40 can twist together several large wires, or pre-terminated wires.

#### Specifications

Max. dia. of all wires.....not to exceed equiv. of three  
14 AWG (1.63mmø) wires  
Max. twist length.....20' (6.096M)  
Max. twist quantity.....9,999 twists per cycle  
Twist speed.....variable up to 26 turns per second

#### Ordering information

AR4240 (WT40).....115V 50/60Hz

#### Optional Parts

IR8242.....power pack enables operation on 220/240V 50/60Hz

IR5257.....custom holder, send materials for sizing

## G10S Wire Twister



This bench unit is for twisting pre-stripped stranded wires, strands of two or more wires, or wrapped shields on coaxial cables.



### Specifications

Wire size.....26 to 12 AWG (0.41mm to 2.06mm $\phi$ )  
based on twisting insert (see below)  
Max. twist length.....1" (25.4mm) dep. on spacers used  
Twisted pairs...not to exceed two 18 AWG (1.02mm $\phi$ ) wires  
*G10S comes with one set of three twist length spacers and one wire guide.*

### Ordering information

AR2161 (G10S).....115V 60Hz  
AR2162 (G10S).....220/240V 50 Hz European plug  
AR2163 (G10S).....220/240V 50 Hz UK plug

### Optional Parts

#### Twisting Inserts

IR8227.....for wire 26 to 22 AWG (0.41 to 0.64mm $\phi$ )  
IR8228.....for wire 24 to 18 AWG (0.51mm to 1.02mm $\phi$ )  
IR8229.....for wire 18 to 12 AWG (1.02 to 2.06mm $\phi$ )  
IR8223.....replacement spacer 1/2" (12.7mm) thick  
IR8224.....replacement spacer 1/4" (6.35mm) thick  
IR8225.....replacement spacer 1/8" (3.18mm) thick  
IR8220.....replacement wire guide

## DCFT Portable Wire Twister



A hand held twister for producing twisted pairs or for neatly twisting together the strands at the ends of pre-stripped stranded wires.

### Specifications

Max. wire size.....12 AWG (2.06 mm $\phi$ ) or equivalent  
Max. twist length...2-1/2" (64mm) dep. on wire construction

### Ordering information

#### Single voltage unit

AR5351 (DCFAT).....twister and power unit, 110V  
AR5352 (DCFAT).....twister and power unit, 220V  
AR5250 (DCFLT).....handpiece only, no power unit

#### Battery operated unit

AR5451 (DCFBT)....twister, battery operated, charger 110V  
AR5452 (DCFBT)....twister, battery operated, charger 220V  
Multi-voltage unit 115/220/240V 50/60Hz

AR4601 (DCFT).....twister, power unit and bench holder  
AR4621 (DCFTL).....handpiece only, no power unit  
IR7000.....multi-voltage power unit and bench holder only

## DCFAT & DCFBT Portable Wire Twisters



Take these portable twisters to the workpiece; the battery recharges in less than 90 minutes to maintain optimum production time.

**Specifications**

Wire size.....two wires 20 AWG (0.81mmø) or equiv.  
Twist length.....unlimited  
Hook length.....3/8" x 1/4" (10mm x 6.35mm)

**Ordering information**

Single voltage units

AR5361 (DCFAH).....twister, power unit, 110V

AR5362 (DCFAH).....twister, power unit, 220V

AR5260 (DCFLH).....handpiece only, no power unit

Battery operated units

AR5461 (DCFBH)....twister, battery operated, charger 110V

AR5462 (DCFBH)....twister, battery operated, charger 220V

Multi-voltage units

AR4701 (DCFH).....multi-voltage 115/220/240V 50/60Hz

AR4721 (DCFHL).....handpiece only, no power

IR7000.....multi-voltage power unit and bench holder only

**DCFH Portable Wire Twister**



A lightweight, quick and easy-to-use hand wire twister; simply place hook in wire loop to twist wires together.

**DCFAH & DCFBH Portable Wire Twister**



This twister becomes portable when used with the battery making it convenient to bring to the workpiece.



AVIONICS / AEROSPACE • AUTOMOTIVE • CONSUMER APPLIANCE • ELECTRICAL / ASSEMBLY • MEDICAL / DENTAL • ELECTRONICS • UTILITIES • PLASTICS • RECREATIONAL • TELECOMMUNICATIONS

The Eraser Company has provided solutions for many companies by modifying our existing products or designing a one-of-a-kind product tailored to your specifications using our Product Customization Service. ***We can help you too!*** Simply complete the form, include details of your production problem, and fax or mail it to the attention of our Custom Products Department.

**Company Name** \_\_\_\_\_

**Contact** \_\_\_\_\_ **Email Address** \_\_\_\_\_

**Address** \_\_\_\_\_ **Phone** \_\_\_\_\_ **Fax** \_\_\_\_\_

**City** \_\_\_\_\_ **State** \_\_\_\_\_ **Zip** \_\_\_\_\_ **Country** \_\_\_\_\_

If you require a signed Confidentiality Agreement before providing information about your project, please download a copy of the Non-Disclosure Agreement found on our website at [www.eraser.com](http://www.eraser.com). If the form is acceptable please fill in the blanks and fax or mail it to us. We will sign and return it to you immediately.

If this agreement is not acceptable and you have your own agreement, please fax, mail, or e-mail a copy to us for our review.

1. Please provide us with as MUCH DETAIL as possible regarding your Application, Idea or Concept.

---



---



---



---



---



---



---



---



---



---

2. Please provide a Separate Page with your Specification Drawing of the Application, Idea or Concept.

3. If you have Material Samples or Part Prototypes, please include them in your Package and send to:

**The Eraser Co. Inc.**  
**Product Customization Department**  
**123 Oliva Drive**  
**Mattydale, NY 13211**



# FREE E.S.P. FORM



Eraser offers a free service to recommend the best solution for your specific application. Once completed, you'll receive your processed sample, along with an evaluation report with our equipment recommendation. If confidentiality is needed, call us for a non-disclosure form, or download at [www.eraser.com](http://www.eraser.com)

Name: \_\_\_\_\_ Title: \_\_\_\_\_ Date: \_\_\_\_\_

Company: \_\_\_\_\_ Type of business: \_\_\_\_\_

Address: \_\_\_\_\_

City: \_\_\_\_\_ State: \_\_\_\_\_ Zip: \_\_\_\_\_ Country: \_\_\_\_\_

Phone: \_\_\_\_\_ Fax: \_\_\_\_\_ Email: \_\_\_\_\_

Type of application:  Wire/cable cutting  Medical tubing cutting  Non-medical tubing cutting  Wire twisting  
 Extruded wire stripping  Cable stripping  Magnet/enamel wire stripping  Heat shrink/infrared heating  
 Other (describe) \_\_\_\_\_

How is process currently being done? \_\_\_\_\_

Present process time per unit? \_\_\_\_\_ Desired process time per unit? \_\_\_\_\_

Daily application volume? \_\_\_\_\_ On-going or one-time application? \_\_\_\_\_

What is your budget for this machine or project? \_\_\_\_\_

**Wire or cable stripping** Do you prefer  hand-held tool  bench machine

Material specs, and manufacturer (i.e. 14 AWG stranded tinned copper conductor, PVC insulation, Belden Wire):  
\_\_\_\_\_

Insulation: compression, displacement, or abrasion allowed?  yes  no To what degree? \_\_\_\_\_

Conductor: nicking, scraping, or strand removal allowed?  yes  no To what degree? \_\_\_\_\_

Required strip length(s) with tolerance(s) \_\_\_\_\_

Other stripping specs or variables we need to know \_\_\_\_\_

Environmental concerns (i.e. dust or fumes) \_\_\_\_\_

**Wire, tubing, or cable cutting** Material specs, and manufacturer: \_\_\_\_\_

Is material  spooled or  loose? For spooled, what is weight of spool including material? \_\_\_\_\_

For spooled, what are dimensions of spool? \_\_\_\_\_ For loose, what is precut length? \_\_\_\_\_

Required cut lengths of application, including tolerances: \_\_\_\_\_

For medical tubing cut quality, is deformation of cut tube end acceptable?  yes  no

For medical tubing, what degree of angle is acceptable? Cut squareness \_\_\_\_\_° Cut straightness \_\_\_\_\_°

**Wire twisting**  twisted pairs  twisted pairs with connectors installed  end twisting of stranded wire

Other (describe) \_\_\_\_\_

Twists per inch \_\_\_\_\_ Connectors installed prior to twisting?  yes  no

Number and size of wires or strands to be twisted \_\_\_\_\_

**Heat shrink/infrared heating** Do you prefer  hand-held tool  bench machine



Send completed form with 20 feet of material to:



Always Moving Forward

315-454-3237 or 1-800-724-0594

[www.eraser.com](http://www.eraser.com)

[info@eraser.com](mailto:info@eraser.com)

(Shipping/UPS)>>

The Eraser Company  
123 Oliva Drive  
Mattydale, NY 13212

(Mailing/Post Office)>>

The Eraser Company  
PO Box 4961  
Syracuse, NY 13221-4961



To receive FREE E.S.P. (Eraser Sample Program) simply send us 20 feet of your material, along with the completed form found on the inside back cover. At no charge, we will:

- Process the material - whether it needs to be cut, stripped, twisted, or otherwise processed - and determine the best product to fit your application.
- Produce a formal report recommending the best Eraser product for your specific application.
- Send back the processed material, with the complete evaluation and a quote for the Eraser solution.

**Eraser specializes in designing and building customized equipment for all types of industries. For unique processing needs, we will custom design a solution just for you.**

[www.eraser.com](http://www.eraser.com)

1-800-724-0594

[info@eraser.com](mailto:info@eraser.com)



**The Eraser Company, Inc.**  
PO Box 4961/ Oliva Drive  
Syracuse, NY 13221, USA

Phone: (315) 454-3237  
Fax: (315) 454-3090

Website: [www.eraser.com](http://www.eraser.com)  
E-mail: [info@eraser.com](mailto:info@eraser.com)

**Wire & Tubing Cutters • Magnet & Enamel Wire Strippers • Wire Twisters  
Dereeling Systems • Measuring & Coiling Equipment • Infrared Heating Tools  
Hand Tools • Component Lead Preparation • Cleaning & Burnishing Brushes**