

Bench Top Wire Processing Products

ARTOS
ENGINEERING COMPANY

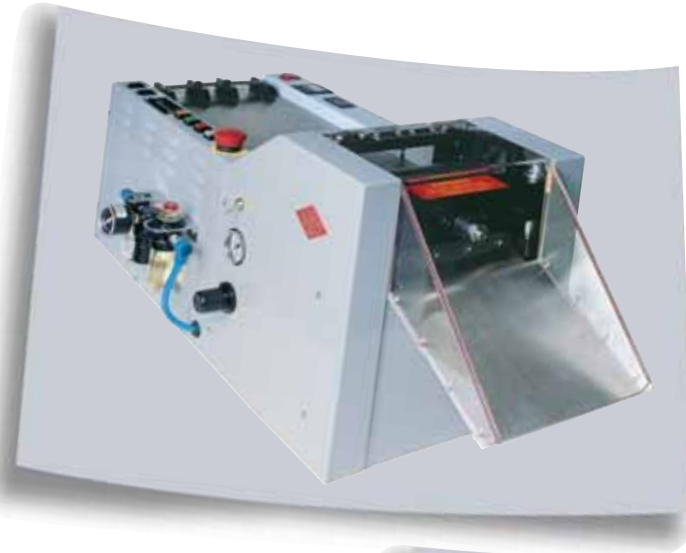


Table of Contents:

<i>Artos Bench Top Wireprocessing Products</i>	<i>Page</i>
<i>Cutting Equipment - Wire</i>	<i>...3</i>
<i>Cutting Equipment - Flat Material / Tubing</i>	<i>...4</i>
<i>Stripping Equipment - Discrete Wire</i>	<i>...5</i>
<i>Stripping Equipment - Multi Conductor / Large</i>	<i>...6</i>
<i>Stripping Equipment - Specialty</i>	<i>...7</i>
<i>Cutting & Stripping Equipment</i>	<i>...8</i>
<i>Terminating Equipment</i>	<i>...8</i>
<i>Accessories</i>	<i>...9</i>
<i>Company History</i>	<i>...10</i>

Note: Specifications are subject to change without notice, and exceptions may apply depending on application, wire and other variables. Optional equipment may require standard machine modification and/or later specifications.

Contact us for any of your machine needs at:

Artos Engineering Company, P.O. Box 1650, Waukesha, WI 53187 U.S.A.

Phone (262) 524-6600 • FAX (262) 524-0400 • www.artosnet.com

e-mail: sales@artosnet.com

**WIRE AND
CABLE CUTTER**

**MODEL
45-048**

- Perfect for low volume processing of wire and cable.
- Foot pedal operated.
- Maximum blade opening is 1 in. (25.4mm). Blade is 3-1/2 in. (88.9mm) long.
- Shears wire and cable up to 1 in. (25.4mm) diameter and bundles of small wires of aluminum or copper with absolute minimal conductor distortion.



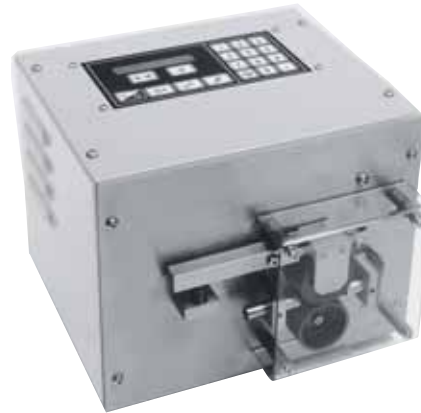
Technical Data

Wire Size
To 1 in. (25.4mm) diameter (wire dependent)
Cut Length:
Wire Stop is adjustable to 16 in. (406mm). Longer cut lengths can be achieved by removing the wire stop.
Dimensions:
Length: 9.625 in. (245m)
Width: 4 in. (102mm)
Height: 7.5 in. (190mm) w/guard closed
Weight:
12 lbs. (5.5 Kg)

**WIRE
PREPPER® LITE**

**MODEL
45-725/45-730**

- Automatically measures, cuts and counts #10 stranded to #30 AWG wire and up to 5/16 in. O.D. multi conductor cable, tubing and heat shrink.
- Light weight and portable – weighing less than 20lbs. It is an ideal bench top productivity tool.
- Complete set-up change in less than one minute – including changing wire reel.
- Fully electronic user-friendly controls with a negligible learning curve to master.
- Equipped with heat treated steel blades for long life and repeatable clean cuts.
- Utilizes powerful motor drive to actuate cutting blades for consistent, square cuts.
- All electric design eliminates pneumatic requirements.
- Data entry can be in either inch or metric measuring systems.
- Requires no tools for set-up or operation.
- Low investment cost and high productivity makes for a quick pay-back and ROI – perfect for job shops.
- Optional kit for cutting Kevlar fiber optic cable.



Technical Data

Cut Lengths:
Minimum: .06 in. (1.6mm)
Maximum: 9,999.99 in. (25M)
Cut Quantity:
Minimum: 1
Maximum: 9,999
Cut Capacity:
Wire: #30 AWG (.05mm²) min.
#10 AWG (6mm²) stranded
Cable: Up to 5/16 in. (7.9mm)
O.D. Multi conductor
Drive Speed:
50 FPM (15.4 MPM)
Feed Wheel:
Tungsten carbide grit coated
Cutting Mechanism:
Geared motor drive

Programming:
User-friendly LCD display with membrane panel data entry
Accuracy:
Approximately 2% of wire length (wire dependent)
Voltage:
120V or 220V reversible fuse 50Hz or 60Hz
Dimensions:
Width: 9.5 in. (241mm)
Depth: 9.5 in. (241mm)
Height: 8.0 in. (203mm)
Weight:
14.5 lbs. (7.9 Kgs)

Production Rate

Cut Lengths	Pieces/Hour
1/4 in. (6.4mm)	13,700
1/2 in. (12.7mm)	12,500
1 in. (25.4mm)	10,700
10 in. (254mm)	2,900
20 in. (508mm)	1,600
40 in. (1016mm)	840
100 in. (2540mm)	350

**WIRE PREPPER®
SYSTEM II**

**MODEL
45-700/45-705**

- Automatically measures, cuts and counts medical grade tubing, heat shrink, rubber cable, #30 to #10 AWG wire and up to 3/8 in. O.D. power cable.
- Complete set-up change in less than one minute – including changing wire reel.
- User friendly prompting controls require little training.
- Stores up to 99 batch programs for quick, easy access to frequently run jobs.
- Equipped with heat treated steel blades for longer life with optional ceramic and carbide blades available.
- Utilizes powerful motor drive to actuate cutting blades for consistent, square cuts.
- Equipped with automatic cut-off switch when cover is lifted to maximize operator safety.
- Programmable in inch or metric measuring systems.
- Encoder provides improved length consistency

Production Rate	
Cut Lengths	Pieces/Hour
1/4 in. (6.4mm)	17,100
1/2 in. (12.7mm)	15,600
1 in. (25.4mm)	11,400
10 in. (254mm)	4,640
20 in. (508mm)	3,270
40 in. (1016mm)	1,860
100 in. (2540mm)	830



Technical Data

Cut Lengths:
Minimum: .06 in. (1.6mm)
Maximum: 9,999.99 in. (25M)
Cut Quantity:
Minimum: 1
Maximum: 9,999
Cut Capacity:
Wire: #30 AWG (.05mm²) min.
#10 AWG (6mm²) stranded
Cable: Up to 5/16 in. (7.9mm)
O.D. Multi conductor
Drive Speed:
50 FPM (15.4 MPM)

Feed Wheel:
Tungsten carbide grit coated
Cutting Mechanism:
Geared motor drive
Programming:
User-friendly LCD display panel data entry
Accuracy:
Approximately 1% of (wire dependent)
Voltage:
120V or 220V reversible fuse 50
Dimensions:
Width: 9.5 in. (241mm)
Depth: 9.5 in. (241mm)
Height: 8.0 in. (203mm)
Weight:
14.5 lbs. (7.9 Kgs)

**MULTI-PURPOSE
MEASURE & CUT-OFF
MACHINE**

**MODEL
C-8**

- Microprocessor Controlled
- Material Run-Out Sensor
- Inch or metric measurement
- Length Calibration Capability
- Reversible Blades
- All Electric Design

The C-8 compliments our popular C-4 and C-5 cutters by offering an economical option that maintains the quality that is inherent to Artos products. The C-8 optimizes performance and value with a system that drives both feed rollers to protect the material being processed and ensure precise lengths of cut material. Each blade has two cutting surfaces doubling the blade life.



Technical Data

Cutting Width Max:
100 mm (3.94")
Maximum Feed Rate:
300 mm (11.81") per second
Material Length:
10 mm (.394") - 10,000 mm (393.7")
Power Supply:
110V, 1 ph, 60 Hz or 230V, 1ph, 50 Hz
Dimensions:
344 x 390 x 200 mm
13.5" x 15.4" x 7.9"
Weight:
10.5 kg (23 lbs)

**MULTI-PURPOSE
MEASURE & CUT-OFF
MACHINES**

**MODEL
C4/5**

- **Material Guides:** Available for multiple feeds for increased production. Optional material run-out and hot stamp marking kits are also available.
- **Material Control:** Variable speed drive to suit weight and size of material. Adjustable acceleration/deceleration of the feed rate prevents material slippage. Material guides control alignment for a clean, square cut.
- **Pneumatic Features:** Feed roller pressure is pneumatically controlled. The cutting action is also pneumatic and adjustable for different power requirements. A special "chop off" feature allows the operator to trim the end of the new material to minimize waste and produce first piece accuracy.
- **Scissors Cut:** Cutting is performed in a "scissors" like progressive cut, providing optimal cutting force.
- **Flexibility:** The power and capacity of the C-4 and C-5 enable them to measure and cut a variety of materials — ribbon cable, round cable, insulators, sheet stock, screen, tubing, etc.
- **Solid State Controls:** Simple electronic control. Indicator lights define cycle sequence status. Digital counters are used for quick setup of quantity, speeds and length.
- **Double Roller Feed:** Both the upper and lower feed rollers are driven. Urethane or steel feed rollers are available with various surface finishes to best suit the material to be processed.



Technical Data

C-4 & C-5 Specifications
Length: Both machines — 1 mm to 99,999 mm (metric only)
Cutting Width:
 C-4 — 5⁷/₈" , 150 mm
 C-5 — 13¹/₂" , 343 mm
Material Thickness:
 C-4 — 1¹/₂" , 12,7 mm
 C-5 — 1¹/₄" , 6,3 mm
 Both machines have a power stroke feature which adds cutting force but limits material thickness and cutting width.
Feed Rate: Both machines — variable from 6.4" to 100"/sec (0,16 to 2,5 m/sec) with adjustable acceleration/ deceleration ramps.

Electrical Supply: Both machines — 120V, 1ph, 60 Hz or 220V, 1ph, 50 Hz

Motor: Both machines — stepper motor.

Weight:
 C-4 — 135 lbs. (61,3 kg)
 C-5 — 160 lbs. (72,7 kg)

Size:
 C-4
 Length: 25" (635 mm)
 Width: 12" (304 mm)
 Height: 14" (355 mm)
 C-5
 Length: 25" (635 mm)
 Width: 20" (508 mm)
 Height: 14" (355 mm)

Air: Both machines: 255 l/min at 5,5 bar, 9 CFM at 80 PSI

Length Accuracy: Normally within .125 inch of nominal setting (3mm)

PRODUCTION RATE

Length of Material	Cuts per Hour*	
	C-4	C-5
6mm	11,500	11,500
25 mm	10,900	10,300
50 mm	10,300	8,800
125 mm	9,045	7,250
250 mm	7,500	5,750
750 mm	5,450	4,050
1,500 mm	3,740	3,000
5,000 mm	1,570	1,380

*pieces per hour can be increased by feeding multiple material strips if suitable.

POWER WIRE STRIPPER

MODEL
45-146

- Instant, accurate, effortless stripping of 8 to 30 AWG (8mm² Nom. to .050mm² Nom.) wire.
- Performs medium to high volume stripping with minimal investment.
- Utilizes pneumatic power with foot pedal actuation.
- Can be purchased as complete kit with foot pedal, hook-up kit and air blast.
- Accepts die blades for Teflon and other difficult insulation.



Technical Data

Wire Size:
8 - 30 AWG (8mm² - 0.05mm²)

Wire Strip Length:
Wire Stop Adjustable to 0.625 in. (15mm)
Longer partial strips can be achieved by removing the wire stop.

Air Requirements:
60 - 100 PSI (4-7 BAR)

Dimensions:
Length: 3.625 in. (92mm)
Width: 14.125 in. (359mm)
Height: 4 in. (102mm)

Weight:
6.5 lbs. (3 Kg)

Description	Cat. No.
Power Wire Stripper only	45-145
45-145 with foot pedal, hook-up kit and air blast	45-146
Foot Pedal	45-902
Hook-Up Kit	45-903
Air Blast Kit	45-905
Air Filter	45-906

Knife Blades - For General Purpose Stripping											Knife Blades - For General Purpose Stripping															
Hole Diameter (inches) for each AWG											Hole Diameter (mm) for each mm ²															
Blade #	8	10	12	14	16	18	20	22	24	26	28	30	Blade #	10.00	6.00	4.00	2.50	1.50	1.00	0.50	0.22	0.20	0.13	0.08	0.05	
L-4419	0.159	0.141	0.106	8-12AWG								L-4419	4.04	3.58	2.69	10-4mm ²										
L-4420		0.144	0.105	0.085	0.073	10-16AWG						L-4420		3.66	2.67	2.16	1.85	1.85								
L-4421		0.144	0.113	0.09	0.072	0.061	0.048	0.048				L-4421		3.66	2.87	2.29	1.83	1.55	1.22	1.22						
L-4422			0.09	0.072	0.061	0.039						L-4422			2.29	1.83	1.55	0.99								
L-4452	For SP - SPT										L-4452	For SP - SPT														
L-4994				0.072	0.061	0.048	0.039	0.032	0.026				L-4994					1.83	1.55	1.22	0.99	0.813	0.66			
L-5361						0.048	0.039	0.032	0.026	0.021	0.016			L-5361						1.22	0.99	0.813	0.66	0.533	0.406	

PNEUMATIC WIRE STRIPPER

MODEL
45-940/45-945

- Automatically strips a wide variety of insulation from #30 AWG to #8 AWG (.05mm²-6mm²)
- Electronic cycle control with LCD display monitors strip settings of blade opening and strip length in English or Metric units.
- Standard V-blades for quick and easy adjustment to a wide range of wires.
- Radius V-blades available when precise wire stripping is required.
- Fixed die and knife blades available to meet precise military stripping requirements.
- Accurate, adjustable strip length control allows strips from .060 in. (1.5mm) to 1 in. (25mm) and can be set for partial strips.
- Permanent and resettable cycle counter allows for monitoring production lot quantities and total strips performed.
- Unique guiding and gripping mechanism minimizes operator dependency.
- Clear front cover ensures operator safety and retains slugs.
- Internal automatic trigger provides accurate, repeatable strip lengths.
- Virtually eliminates Repetitive Motion Disorders associated with high-production hand-stripping.
- Small footprint, lightweight.
- Small breakout, 1/2 in. plus strip length, allows stripping of short leads.



Technical Data

Strip Length:
Minimum: .060 in. (1.5mm)
Maximum: 1 in. (25mm)

Strip Capacity:
Minimum: #30 AWG (05mm²)
Maximum: #8 AWG (6.0mm²)

Accuracy: Meets military specifications with die or fixed knife blades in most applications.

Voltage:
12V DC required.
45-940 - 120V/60Hz
45-945 - for 220V/50

Air Pressure: 60-100 PSI (4-7 bar)

Air Filter: Recommended, but not required.

In-Line Oiler: Not required

Blade Type: Hardened steel V-blades supplied. Heat treated, fixed die or fixed knife or radius blades are available.

Production Rate: 2,200 pieces/hour

Machine Cycle Time: Less than 1 second

Dimensions:
Width: 4.4 in. (112mm)
Depth: 12.9 in. (328mm)
Height: 5.8 in. (147mm)

Weight: 8 lbs. (3.64 kg)

Certifications: CE certified

PRECISION ROTARY STRIPPERS

MODEL
45-211A/45-213A

- Precision, nick-free stripping of 16 to 28 AWG (1.5mm² Nom. To 0.8mm² Nom.) wire.
- Single-blade models handle easily stripped insulation grades, including Teflon®.
- Dual-blade handles tight adhering insulation grades, including Kapton®.
- Dual-blade especially good for small gauge wires to 30 AWG. Rotary action of stripping head tightens twist of standard wire.
- Rotation direction can be either clockwise or counter-clockwise to match lay of standard wire.



Technical Data

Single-Blade Precision Rotary Stripper*

Description	Unit	Weight	Cat. No.
120VAC, 60 Hz	1	14.5 lbs.	45-211A
240VAC, 50 Hz	1	14.5 lbs.	45-212A

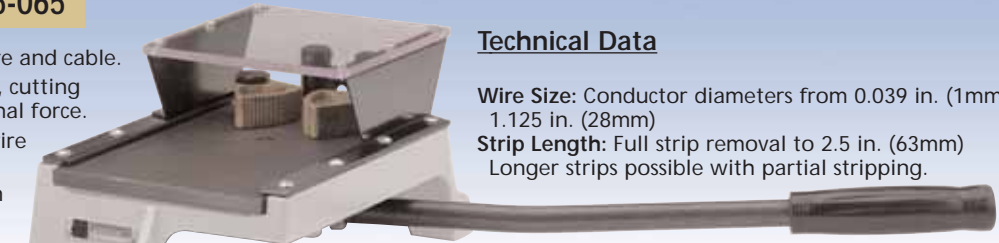
Dual-Blade Precision Rotary Stripper*

Description	Unit	Weight	Cat. No.
120VAC, 50 Hz	1	14.5 lbs.	45-213A
240VAC, 50 Hz	1	14.5 lbs.	45-214A

*One free guide with every unit. Please specify part # when ordering.

LEVEL STRIPPERS	MODEL
	45-064/45-065

- Perfect for low volume processing of wire and cable.
- Long lever swings two knife-type blades, cutting insulation and removing slug with minimal force.
- Round blades will strip down to finest wire provided sufficient insulation thickness.
- Strips multiple wires of same gauge with one stroke using parallel flat blades.
- Strips parallel cable ribbon cable and cable up to 1-1/8 in. (2.86cm) diameter. Strips rubber, plastic (including PCV and polyethylene, fiberglass and fabric insulations).
- Large selection of blades available.



Technical Data

Wire Size: Conductor diameters from 0.039 in. (1mm) to 1.125 in. (28mm)
Strip Length: Full strip removal to 2.5 in. (63mm)
 Longer strips possible with partial stripping.

Dimensions w/o Handle:
 Length: 11 in. (279mm)
 Width: 7 in. (178mm)
 Height: 45-064 5 in. (127mm)
 45-064 5.75 in. (146mm)
Weight: 16 lbs. (7.3 Kg)

Description	Cat. No.
Standard Lever-Stripper	45-064
Large Lever-Stripper	45-065

Standard-Lever Stripper Blades For 45-064 For wire to 0.50 in (12.5mm)
 The following grooved blades are suggested for Standard Lever Stripper.

Hole Dia. in./mm	Cat. No.	Hole dia. in./mm	Cat. No.
Straight (Parallel Blades)	L-3064	.2720/6.90	L-3617
.0390/0.99	L-3616	.2900/7.36	L-3075
.0595/1.51	L-3065	.3125/7.93	L-3076
.0785/1.99	L-3066	.3320/8.43	L-3618
.0995/2.52	L-3067	.3480/8.83	L-3077
.1200/3.05	L-3068	.3680/9.34	L-3619
.1405/3.57	L-3069	.3860/9.80	L-3078
.1610/4.09	L-3070	.4040/10.26	L-3620
.1820/4.62	L-3071	.4210/10.69	L-3621
.2040/5.18	L-3072	.4375/11.11	L-3079
.2280/5.79	L-3073	.453/11.50	L-3622
.2500/6.35	L-3074	.468/11.88	L-3628

Large-Lever Stripper Blades For 45-065 For wire to 1.125 in (28mm)
 The following grooved blades are suggested for Large Lever Stripper.

Hole Dia. in./mm	Cat. No.	Hole dia. in./mm	Cat. No.
Straight (Parallel Blades)	I-6561	.625/15.88	I-6543
.312/7.92	I-6559	.650/16.51	I-6544
.348/8.84	I-6558	.700/17.78	I-6545
.386/9.80	I-6557	.750/19.05	I-6546
.400/10.16	I-6556	.800/20.32	I-6547
.421/10.69	I-6555	.850/21.59	I-6548
.435/11.05	I-6537	.880/22.35	I-6549
.468/11.87	I-6538	.925/23.50	I-6550
.500/12.70	I-6539	.960/24.38	I-6551
.525/13.34	I-6540	1.000/25.40	I-6552
.560/14.22	I-6541	1.070/27.18	I-6553
.600/15.24	I-6542	1.125/28.58	I-6554

LARGE WIRE ROTARY STRIPPER	MODEL
	45-199/45-200

- Processing of larger wires and cables to .750 in. (19mm) diameter.
- Dual blade ensures clean, square cuts.
- Blade depth is secured by a locking screw to eliminate nicking.
- Wire guides are changed easily and without tools.
- Value priced to minimize investment.



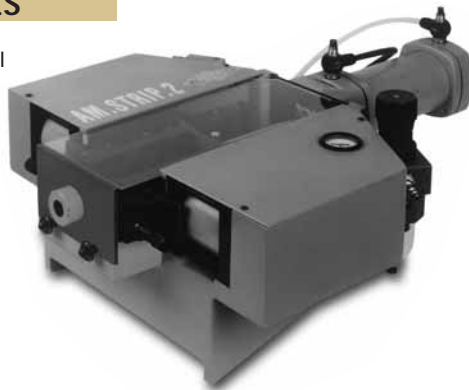
Technical Data

Wire Size: .120" to .750" Insulated OD (3mm-19mm)
Strip Length: Up to 5.5" (139.5mm) (Remove stop-rod and post for longer strips)
Voltage:
 115 VAC, 60 Hz, 1.4A (45-199)
 220 VAC, 50 Hz, .54A (45-200)
Dimensions:
 6" H x 9" W x 10.5" D
 153mm H x 229mm W x 267mm D
Weight:
 11.5 lbs (5.3 Kg)

Description	Cat. No.
Large Wire Rotary Stripper 115V	45-199
Large Wire Rotary Stripper 220V	45-200

AM-Series HEAVY DUTY PNEUMATIC WIRE STRIPPING MACHINES

- All-pneumatic operation for powerful and reliable results.
- Easy wire loading & operation.
- Adjustable strip control for V-style stripping blades.
- Flexible blade configuration for difficult applications.



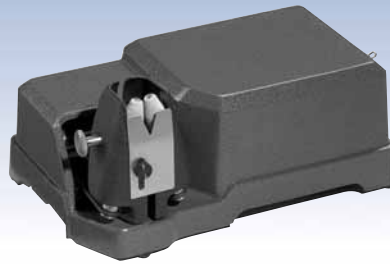
Technical Data

AM-1
Strip Length: 3/16" - 2 1/2" (4 - 63mm)
Max Wire Size: 4 AWG (20mm²)
Weight: 42 lbs. (19 kg)
Dimensions: 12" x 13.5" x 6"
 (305 x 343 x 153mm)
Air Requirement: 80 PSI (5,5 Bar)

AM-2
Strip Length: 3/16" - 4 3/4" (4 - 120mm)
Max Wire Size: 0000 AWG (100mm²) 1" (25mm) O.D.
Weight: 64 lbs. (29 kg)
Dimensions: 17" x 21.6" x 7.9"
 (431 x 549 x 201mm)
Air Requirement: 80 PSI (5,5 Bar)

FIBER CONE STRIPPERS **MODEL 45-157A/45-267A**

- Cones remove all types of film wire insulations.
- Design enables wire stripping to within 1/7 in. (3.2mm) of small parts coils, armatures, etc.
- Finger guard assures operator safety.
- Ideal for transformer coil, motor, alternators or generator manufacturing or repair application.
- Cone width is easily adjustable without tools.



Technical Data

Wire Size:
30-46 AWG (0.05 mm² - 0.001mm²)
(wire dependent)

Wire Size:
From 0.125 in. (3.2mm)

Cone Width:
Adjustable to 0.200 in. (5mm)

Dimensions:
Length: 7.25 in. (185mm)
Width: 11.75 in. (299mm)
Height: 6.50 in. (165mm)

Weight:
14 lbs (6.4 Kg)

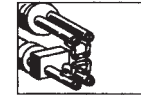
Description	Unit	Weight	Cat. No.
Fiber Cone Stripper, 115VAC, 50/60Hz	1	-	45-157A
Fiber Cone Stripper, 220VAC, 50/60Hz	1	-	45-267A
Fiber Glass Cones, General Purpose 35-46 AWG Wire	Pr.	1 oz.	L-5279
Fiber Glass Cones, Medium/Heavy Purpose 30-35 AWG Wire	Pr.	1 oz.	L-5446

THERMO-STRIP® WIRE STRIPPER **MODEL 45-130**

- Adjust the heat up to 1800°F (982°C) for the precise amount you need for the specific application.
- Long nose allows reach into hard-to-reach areas.
- Five different preformed heated elements are available to strip many sizes of insulation from 36 AWG to 3/8 in. diameter.
- Can be used as a hand tool or bench top stripper.
- Total unit weighs less than 7 lbs.
- Can change just the heating element, rather than entire tip, reducing operating costs.



Standard

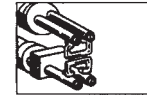


Medium and Heavy-Duty Element, L-5589 & L-5597

Optional

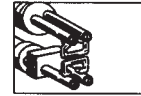


Restricted Area Element, L-5751



Element for 3/32 in. to 5/16 in. dia. wire, L-5752

Optional



Element for flat and extra wide multi-wire, L-5753

Optional



Element for Single Loop Tool-Medium Duty, L-5599

ROTARY COAXIAL CABLE STRIPPER **MODEL 45-201/45-204**

- Three separate stripping heads for three stage stripping.
- Stripping length easily adjusted without tools.
- Wire guides are interchangeable between all three stripping heads.
- Simple operation allows for minimal training.
- Value priced to minimize investment.



Technical Data

Wire Size:
.028" to .265" Insulated OD (.7mm-6.7mm)

Strip Length:
Up to 3" (76.1mm)

Voltage:
115 VAC, 60 hz, 1.4A (45-201)
220VAC, 50 hz, .54A (45-204)

Dimensions:
6.125" H x 11.750" W x 10.750" D
156 mm H x 300mm W x 275mm D

Weight:
13 lbs (5.9 Kg)

Description	Cat. No.
Rotary Coaxial Cable Stripper 120V, 60hz	45-201
Rotary Coaxial Cable Stripper 220V, 50hz	45-204

TWIN WHEEL STRIPPERS **MODEL 45-159A/45-269A**

- Heavy duty design for challenging stripping applications.
- Uses various grades of wire and fiberglass brushes to strip wire from 8 to 46 AWG (8.37 mm² Nom. To .001mm² Nom.).
- Handles any known film insulation type.
- Removes oxides from component leads quickly and easily.
- Finger guard protection maximizes operator safety.
- Wheel opening is easily adjusted without tools.



Technical Data

Wire Size:
4-46 AWG (25 mm² - 0.001mm²)
(wire dependent)

Wheel Opening:
Adjustable to 0.40 in. (10mm)

Dimensions:
Length: 10.75 in. (723mm)
Width: 13.625 in. (346mm)
Height: 6.75 in. (172mm)

Weight:
17 lbs (7.7 Kg)

Description	Unit	Weight	Cat. No.
Twin Wheel Stripper, 115VAC, 50/60Hz	1	-	45-159A
Twin Wheel Stripper, 220VAC, 50/60Hz	1	-	45-269A
Fiber Glass Wheel, General Purpose 25-46 AWG Wire	Pr.	3 oz.	L-6063



PROGRAMMABLE CRIMPING MACHINE | **MODEL TU-10**

- Servo driven-control
- Programmable stroke 0-40mm
- Optional programmable crimp height
- Optional crimp force monitor
- Accepts most die units
- Optional PC interface
- Optional pneumatic feed

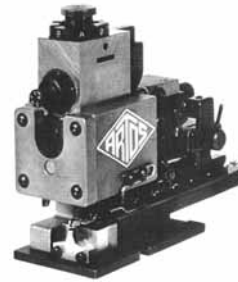


Technical Data

Press Stroke: Programmable 0 to 40 mm (0 - 1-5/8")
Crimp Height: Micro adjust (optional programmable) +/-2.5 mm from nominal
Force Rating: 2500 lbs or 5000 lbs (1100 Kg or 2200 Kg)
Power Requirements: 110V or 220V, 1 Phase, 60/50 Hz.
Air Requirement: Required for Options Only

TERMINAL APPLICATOR | **QUICK DIE**

- High quality robust design
- Entire unit snaps in and out of the press using a quick release mechanism
- Feed stroke and terminal tracks are easily adjusted
- Insulation and conductor crimp tools are independently adjustable
- Wire gathering fingers can be built into the die to assure correct wire placement
- Tooling made to each customer's exact specifications



Technical Data

Feed Direction: Left to right
 Right to Left
 End to End
Stroke: 38, 1 mm (1.5 inch)
Mount: Snap in
Feed: Mechanical on up or down stroke

PORTABLE HIGH-PRODUCTION WIRE PROCESSOR | **MODEL CS-336**

Membrane keypad for fast, easy program entry of tasks:

- Wire feed speed (adjustable up to 1,05 m/sec.)
- Inch or metric measurement
- Wire length recalibration
- First piece trim feature
- Part program entry or recall (up to 99 programs)
- Short wire mode (wire length less than 2"/51mm)
- Single cycle
- Start/stop
- Quick-lock guide tubes can be changed in seconds with no tools
- Smooth lever action allows operator to open and close feed wheels quickly when changing wires



Technical Data

Wire Length: 1,4mm to 99,999mm (.06" to 3937")
Strip Length: 0,254mm to 25mm (0.01" to 0.99")
 Partial or full strip
Blade Depth: (wire gauge): 0,25mm to 2.26mm for 30 AWG to 12 AWG
Size: 16" x 13.5" x 9.5" (406 x 343 x 241mm)
Weight: 70 lbs (32 Kg)
Electrical Requirement: 110V or 220V

PRODUCTION RATES

Wire Length	Pcs/Hr.
2" (51mm)	4200
12" (305mm)	3250
24" (1219mm)	1800

Accuracy: 1% of wire length or better for 2.5" lengths or longer.

PROGRAMMABLE WIRE PROCESSOR | **MODEL CS-337**

- Lightweight, compact design – easily portable from station to station
- Wire marker interface capabilities
- Handles for easy lifting
- Visual display and membrane keypad for fast, easy program entry of tasks:
 - Wire feed speed
 - Inch or metric measurement
 - Wire length calibration
 - Automatic wire in-feed
 - First piece trim feature
 - Part program storage (up to 99 programs)
 - Short wire mode (wire length less than 2") (51mm)



Technical Data

Wire Range: 30 AWG to 8 AWG (0,05 - 8mm²) wire dependent
Max O.D.: .25" (6,35mm)
Wire Length: .06" (1,4mm) to 3937" (99,999mm)
Strip Length: .01" (.254mm) to 2" (50,8mm)
Output: Over 2,000 pcs./hr (rate is dependent on application)
Electrical Requirements: 110V or 240V
Size: 16" x 13.5" x 9.5" (406mm x 343mm x 241mm)
Weight: 70 lbs. (32 Kg)

**PREMIUM WIRE
DE-REELER**

**MODEL
45-712**

- For use with any wire processing equipment and 6" to 16" dia. wire reels
- Non-motorized de-reeling for any processor
- Avoids wire tangles and over spooling
- For use with wire 8 AWG - 30 AWG (8mm² - 0.05mm²)



Technical Data

Dimensions: (L, W, H)
27.5" x 16" x 32.5"
(700mm x 410mm x 830mm)

Weight: 15 lbs. (7 Kg)

Spool Size: 6" - 16" diameter (152 - 406mm)
11-1/2" (290mm) wide

**LIGHT DUTY
PREFEEDER**

**MODEL
45-714A**

- Allows for the automatic dereeling of wire from spool.
- Designed for use with any bench top automatic wire-processing machine.
- Features a belt feed material transport and infinitely adjustable speed control.
- Optimizes the performance of wire processing system by eliminating wire tangles, wire mis-feeds, and length variations.



Technical Data

Spool Weight: Up to 60 lbs. (27 Kg.)

Spool Size: Diameter to 18 inches (450mm), Width to 14 inches (350mm)

Material Size: Up to .200 inches (5mm)

Feed Rate: Up to 7.3 ft./min. (2.2 M/Sec.)

Dimensions: 22" W x 22" H x 16.5" D (560mm x 560mm x 420mm)

Weight: 47 lbs (22 Kg)

Electrical Requirements: 110V, 60Hz, 2 amp or 220V, 50 Hz, lamp (220V is extra charge)

**BENCH TOP
WIRE MARKER**

**MODEL
WM-6/B**

Features

- Flexible, easy installation bench top design
- Simple-to-change foil and type designs
- Completely adjustable controls for dwell, temperature, and pressure
- Different models available for benchtop or machine mounting
- Features two stamping anvils with separate foil for end marking, or more efficient continuous marking



Technical Data

Electrical Requirements: 110V/120V, 1 phase 60 Hz or 220V, 1 phase 50 Hz

Pneumatic Requirements: 80 PSI (5-8 bar)

Air Consumption: 1.26 Ft³/Hour
(36 Lt/Hr) at 4,000 Cy/Hr

Dimensions: Height 24.5" (620 mm)
Depth 18" (460 mm)
Width 16.5" (420 mm)

Weight: 38 lbs (17 Kg)

Max. # of Characters: 16 on each end, total is 32 - curved and flat type available



Artos— World Leader in Wire Processing Systems

Artos Engineering developed the world 's first automatic wire processing machine in 1926, and has been the leading supplier in the field ever since. We are firmly committed to maintaining that position.

Today's sophisticated Artos wire processing systems are solidly based on the knowledge acquired over those decades of experience. We manufacture and market a variety of highly productive, easy-to-use, competitively-priced machines of unsurpassed quality, reliability, versatility and designed-in flexibility.

Artos pioneered the application of computerized electronic control to servo-driven, pneumatic/mechanical wire processing equipment, and this work is continuing today. Of course, our ongoing goal is to provide the best solutions for your wire processing requirements.

While predicting the future is always risky, we're convinced that in the years to come, automated manufacturing systems will become more and more widespread—throughout industry and around the globe. As the human labor element is diminished, our products will be expected to contribute more and more to those systems.

Accordingly, we are increasing our efforts to work even more closely with our customers, striving to become more flexible and more responsive to your needs. Above all, we want the machines we sell to deliver the consistent production and quality you must have, in order to succeed and prosper in the global community.

A handwritten signature in black ink, appearing to read "JOHN OLSEN II".

John H. Olsen II
President & CEO

A World Leader in Wire Processing Systems

Artos leads the way with machine innovations and a industry wide commitment about designing value into your next wire processing machine.

Contact your local Artos sales engineer for additional product information on our full line of wire processing equipment.



CS-326



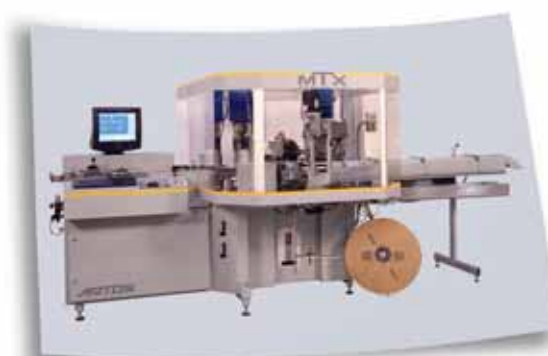
CS-327



STX



MTX Series 5



MTX Series 10

Contact us for any of your machine needs at:

Artos Engineering Company, P.O. Box 1650, Waukesha, WI 53187 U.S.A.

Phone (262) 524-6600 • FAX (262) 524-0400 • www.artosnet.com

e-mail: sales@artosnet.com

Wire Processing Evaluation Form

This form is designed to provide assistance in determining the wire processing equipment which will best suit your needs. Please complete this form as it applies to your application, and return to Artos following the instructions below. Include a minimum of 10 inches of each wire.

Project Information (Check one):

- New Project
- Increase In Volume
- Replacement Equipment

Estimated Volume (Check one):

- Less 100/Day
- 100 – 1,000/Day
- 1,000 – 10,000/Day
- Over 10,000/Day

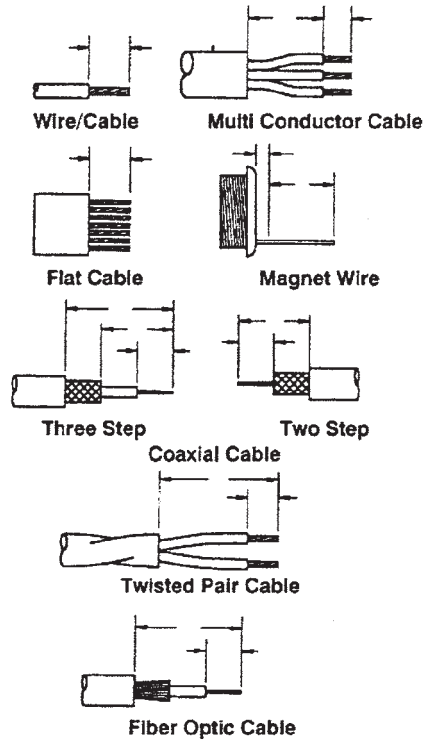
Wire Type (Select All Needed):

- Discrete Wire
 - Min AWG _____
 - Max AWG _____
- Multi-Conductor
 - Min OD _____
 - Max OD _____
- Coax Wire
- Twisted Pair
- Fiber Optic Wire
- Magnet Wire
- Flat Cable
 - Total Width _____
 - Cond. Pitch _____
- Other _____

Required Processing (Select all needed)

- Cutting to Length
- Stripping
- Inner Jacket Stripping
- Wire Marking
- Termination
- Doubling
- Weather Seal
- Twist / Tinning
- Other (Describe): _____

Stripping Requirements: Please write the appropriate dimensions for each cable type:



End User Information:

Please enclose a business card or complete the following information:

Name: _____
 Company: _____
 Address: _____
 City, St, Zip: _____
 Phone: _____ Fax: _____
 Email: _____

Send sample material to:
 Ship via UPS

Artos Engineering Co.
 Attn: Machine Sales Department
 W228N2792 Duplainville Rd.
 Waukesha, WI 53186 USA

DISTRIBUTED LOCALLY BY: